

SPECTRUM



DISTRIBUTION LIMITED



www.spectrumdistribution.ie



SCAN ME

TRADE CATALOGUE 2024



TABLE OF CONTENTS

LIGHT FITTINGS.....	2
DOWNLIGHTS.....	4
LUMINAIRES.....	11
LED LUMINAIRES.....	12
LED STRIPS.....	17
LED BULKHEADS.....	18
WALLPACKS.....	22
LINK FITTINGS.....	24
SHAVERLIGHTS.....	25
SLIMLINE.....	26
COMMERCIAL.....	27
SITE.....	29
INDUSTRIAL.....	31
FLOODLIGHTING.....	32
SOLAR.....	36
INDUSTRIAL.....	37
OFFICE LIGHTING.....	38
EMERGENCY.....	40
LANTERNS.....	41
EXTERIOR.....	44
BATHROOM.....	55
BATTERY LED.....	58
LAMPS.....	59
EVOLAMP LED FILAMENT CANDLE LAMPS.....	60
EVOLAMP LED FILAMENT GOLFBALL LAMPS.....	60
EVOLAMP LED FILAMENT ANTIQUE LAMPS.....	62
EVOLAMP LED FILAMENT CLEAR LAMPS.....	63
EVOLAMP LED GU10 LAMPS.....	64
EVOLAMP LED DIMMABLE THERMAL PLASTIC LAMPS.....	65
EVOLAMP LED THERMAL PLASTIC LAMPS.....	66
EVOLAMP LED G9 DIMMABLE LAMPS.....	67
EVOLAMP LED STRIP TUBE LAMPS.....	68
T8 LED TUBES.....	69
EVOLAMP LED LAMPS.....	70
EVOLAMP LED PVC LAMPS GOLF / PEAR.....	73
CROMPTON LED DIMMABLE FILAMENT LAMPS.....	74
CROMPTON LED THERMAL PLASTIC LAMPS.....	75

CROMPTON DIMMABLE LED THERMAL PLASTIC LAMPS.....	76
CROMPTON LED THERMAL PLASTIC GLS LAMPS.....	77
CROMPTON DIMMABLE LED FILAMENT GLS LAMPS.....	78
CROMPTON DIMMABLE LED ANTIQUE FILAMENT LAMPS.....	79
CROMPTON LED G9 G4 & R7S LAMPS.....	80
CROMPTON LED GU10 LAMPS.....	81
CROMPTON LED REFLECTOR LAMPS.....	82
EVOLAMP OVEN / HEAT LAMPS.....	83
EVOLAMP LED PVC GOLFBALL.....	84
EVOLAMP LED GU10 COLOUR LAMPS.....	85
RAYTECH.....	86
ELECTRICAL ACCESSORIES.....	94
EXTERIOR SOCKETS.....	95
EXTERIOR SWITCHES.....	97
STATS.....	99
DETECTORS.....	100
ELECTRICAL ACCESSORIES.....	102
HEATING.....	104
HYGIENE.....	106
HEATERS.....	108
MINI SENSOR ALARM.....	114
FIREHAT.....	114
FLYKILLERS.....	120
FANS.....	121
IP55 BOX ENCLOSURE.....	122
ELECTRICAL BOXES.....	122
GLOSSARY.....	123
INGRESS PROTECTION RATING.....	125
CONDITIONS OF SALE.....	126

A photograph of a modern office building at night, viewed from a low angle looking up. The building's facade is composed of a grid of large glass windows. Many of the windows are illuminated from within, showing office interiors with desks, computers, and people working. The interior lights are a warm yellow, contrasting with the deep blue of the twilight sky. A prominent red banner with a white border is superimposed over the upper portion of the image, containing the text 'LIGHT FITTINGS' in white, bold, sans-serif capital letters. The banner has a slight 3D effect, appearing to wrap around the building's edge.

LIGHT FITTINGS

DOWNLIGHTS

- Dimmable**
- Colour Selectable**
- IP44 Rated**
- CCT Twist Bezel**
- Suitable for Soffits**

- Description:** IP44 ALPHA LED SOFFIT DOWNLIGHTER
- Wattage:** 6W
- Lumen:** 480-540
- Finish:** WHITE
- Dimensions:** 85x52
- Cutout:** 70
- Led Type:** SMD2835
- Colour Temp:** 3000K/4000K/6000K
- Dimmable:** YES
- CRI:** >80
- Beam Angle:** 120
- Rated Life Hrs:** 25,000
- Voltage:** 230V
- IP rating:** IP44
- Material:** PC

ALPHA DOWNLIGHTER



CODE	DESCRIPTION
AL6/CCT	6W SOFFIT DOWNLIGHTER
BEZ6W	WHITE BEZEL
BEZ6BL	BLACK BEZEL
BEZ6BRN	BROWN BEZEL
BEZ6MC	MATT CHROME BEZEL

LIMA DOWNLIGHTER RANGE



DOWNLIGHTS

Dimmable

Colour Selectable

IP44 Rated

Built in Driver

Easy Wire Connector

LED type: SMD2835
Colour temp: 3000K/ 4000K/ 6000K
Dimmable: Yes
CRI: >80
Beam angle: 120
Rated life (Hrs): 20,000
Voltage: 230V
IP rating: IP44
Material: PC

CODE	WATTAGE	LUMEN	FINISH	DIMENSIONS	CUTOUT
LM6/CCT/W	6W	600	WHITE	95x58	75
LM6/CCT/BL	6W	600	BLACK	95x58	75
LM8/CCT/W	8W	800	WHITE	115x59	95
LM8/CCT/BL	8W	800	BLACK	115x59	95
LM13/CCT/W	13W	1450	WHITE	145x66	125
LM13/CCT/BL	13W	1450	BLACK	145x66	125

DOWNLIGHTS

**AVENTIS TILT
 DOWNLIGHTER**

- Dimmable**
- Colour Selectable**
- IP44 Rated**
- Pvc Construction**
- Weather Resistant**
- CCT**
- Easy Wire Connector**

Description: AVENTIS SOFFIT DOWNLIGHTER

Wattage: 8W

Lumen: 640

Dimensions: 90x50

Cutout: 70

Led Type: COB

Colour Temp: 3000K/
4000K/6000K

Dimmable: YES

Cri: >80

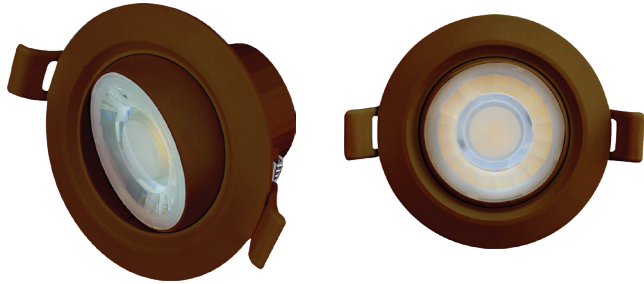
Beam Angle: 120

Rated Life Hrs: 20,000

Voltage: 230V

IP rating: IP44

Material: PC



CODE	FINISH
1403W/CCT	WHITE
1403BL/CCT	BLACK
1403BRN/CCT	BROWN

SLIMLINE DOWNLIGHTERS



CODE	WATTAGE	LUMEN	DIMENSIONS	CUTOUT
FRSMD3/CCT	3W	285	85x24	75
FRSMD6/CCT	6W	550	120x25	110
FRSMD12/CCT	12W	1140	175x25	160
FRSMD18/CCT	18W	1710	225x25	215
FRSMD24/CCT	24W	2250	300x25	280

SLIMLINE DOWNLIGHTER ACCESSORIES

CODE	Description
DRIVE3/D	3W DIMMABLE DRIVER
DRIVE6/D	6W DIMMABLE DRIVER
DRIVE12/D	12W DIMMABLE DRIVER
DRIVE18/D	18W DIMMABLE DRIVER
DRIVE24/D	24W DIMMABLE DRIVER

DOWNLIGHTS

Colour Selectable

Slimline Design

CCT Options

Remote Driver Included

Long Life

Finish: WHITE
LED type: SMD2835
Colour temp: 3000K/ 4000K/ 6000K
Dimmable: No
CRI: >80
Beam angle: 120
Rated life (Hrs): 20,000
Voltage: 230V
IP rating: IP20
Material: Aluminium



DOWNLIGHTS

- DIMMABLE**
- INSTANT FULL LIGHT**
- IP65 RATED**
- COLOUR BEZELS AVAILABLE**

Description: FIRE RATED DOWNLIGHTER
Wattage: 6W
Led Type: SMD2835
Colour Temp: 3000K/ 4000K/6000K
Dimmable: YES
Cri: >80
Beam Angle: 120
Rated Life Hrs: 30,000
Voltage: 230V
IP rating: IP65
Material: ALUMINIUM

FIRE RATED DOWNLIGHTERS



CODE	DESCRIPTION	LUMEN	DIMENSIONS	CUTOUT
RFR6/CCT	RIO FIRE RATED DOWNLIGHTER	580/620/644	80x50	55
NFR6/CCT	NERO FIRE RATED DOWNLIGHTER	470/520/480	85x50	70

BEZELS – RIO

CODE	FINISH
RFBEZ/MC	MATT CHROME
RFBEZ/CH	CHROME
RFBEZ/BL	BLACK

BEZELS – NERO

CODE	FINISH
NFRBEZ/MC	MATT CHROME

RADIUS DOWNLIGHTER



DOWNLIGHTS

**SURFACE/RECESSED
 OPTIONS**

ADJUSTABLE BRACKET

SWITCHABLE COLOUR

INSTANT FULL LIGHT

DUAL WATTAGE

DIMMABLE

Description:	RADIUS DOWNLIGHTER
Wattage:	12W/18W
Lumen:	1140/1710
Finish:	WHITE
Dimensions:	220x21
Cutout:	100-200
Led Type:	SMD2835
Colour Temp:	3000K/ 4000K/6000K
Dimmable:	YES
Cri:	>80
Beam Angle:	120
Rated Life Hrs:	30,000
Voltage:	230V
IP rating:	IP44
Material:	ALUMINIUM

CODE	DESCRIPTION
RAD/CCT/D	DUAL WATTAGE SURFACE/RECESSED DOWNLIGHT

DOWNLIGHTS

CABINET DOWNLIGHTERS

CCT - COLOUR SELECTABLE

SURFACE/RECESSED OPTIONS

- Description:** LED CABINET DOWNLIGHT CCT
- Wattage:** 2.5W
- Lumen:** 125
- Dimensions:** 70x21
- Cutout:** 54
- Led Type:** SMD2835
- Colour Temp:** 3000K/4000K/6000K
- Dimmable:** NO
- Cri:** >80
- Beam Angle:** 120
- Rated Life Hrs:** 30,000
- Voltage:** 230V
- IP rating:** IP20
- Material:** ALUMINIUM



CODE	FINISH
LEDCAB240W/CCT	WHITE
LEDCAB240MC/CCT	MATT CHROME
CODE	DESCRIPTION
TRIF	TRIANGULAR SURFACE HOLDER MATT CHROME

GU10 SURFACE SPOTLIGHT



LUMINAIRES

6W, 3K GU10 LAMP INCLUDED

Description:	GU10 SURFACE SPOTLIGHT
Wattage:	6W
Lumen:	520
CAP:	GU10
Voltage:	230V
IP rating:	IP20
Dimensions:	134 x 57mm
Material:	PC/ALUMINIUM

CODE	DESCRIPTION	FINISH
SS6W	GU10 SPOTLIGHT	WHITE
SS6B	GU10 SPOTLIGHT	BLACK

LED LUMINAIRES

APOLLO RANGE

- IP54 RATED**
- CCT SWITCHABLE**
- EASY CLIP MOUNTING FRAME**
- DIMMABLE**



Description: APOLLO LED SURFACE FITTING, DIMMABLE

Finish: WHITE

Led Type: SMD2835

Colour Temp: 3000K/4000K/6000K

Dimmable: YES

Cri: >80

Beam Angle: 120

Rated Life Hrs: 30,000

Voltage: 230V

IP rating: IP54

Material: PC

CODE	WATTAGE	LUMEN	DIMENSIONS
APD18/CCT	18W	1950	280x53
APD24/CCT	24W	2600	330x53
APD35/CCT	35W	3870	400x53

SATURN RANGE



LED LUMINAIRES

SLIMLINE & STYLISH

DIMMABLE

CCT

IP44 RATED

UP TO 600MM AVAILABLE

SUSPENSION KITS AVAILABLE

- Description:** LED SATURN SURFACE FITTING
- Finish:** WHITE
- Led Type:** SMD2835
- Colour Temp:** 3000K/4000K/6000K
- Dimmable:** YES
- Cri:** >80
- Beam Angle:** 110
- Rated Life Hrs:** 30,000
- Voltage:** 230V
- IP rating:** IP44
- Material:** PC

CODE	WATTAGE	LUMEN	DIMENSIONS
SATD18/CCT	18W	1800	300x33
SATD25/CCT	25W	2500	400x33
SATD50/CCT	50W	4600	600x33

SUSPENSION KITS

CODE	DESCRIPTION
SKIT/SAT18/25	Suspension for 18W + 25W
SKIT/SAT50	Suspension for 50W

LED LUMINAIRES**IP65 RATED****DUAL WATTAGE****DIMMABLE****CCT**

Description:	DELTA IP65 SURFACE LUMINAIRE
Wattage:	18/25W
Lumen:	1800/2500
Finish:	WHITE
LED type:	SMD2835
Dimensions:	300x62
Colour temp:	3000K/ 4000K/5700K
Dimmable:	YES
CRI:	>80
Beam angle:	120
Rated life (Hrs):	30,000
Voltage:	230V
IP rating:	IP65
Material:	PC

DELTA IP65 BATHROOM LUMINAIRE



CODE	DESCRIPTION
DEL65/CCT	DELTA IP65 SURFACE LUMINAIRE

OMNI SURFACE LUMINAIRE



LED LUMINAIRES

Description:	10W OMNI LED LUMINAIRE
Wattage:	10W
Lumen:	750
Finish:	WHITE
Dimensions:	271 x 92
LED type:	SMD2835
Colour temp:	4000K
Dimmable:	NO
CRI:	>80
Beam angle:	120
Rated life (Hrs):	30,000
Voltage:	230V
IP rating:	IP54
Material:	PC

CODE	DESCRIPTION
OM10/MIN	OMNI LED LUMINAIRE

LED LUMINAIRES

STELLAR LED RANGE

- IP54 RATED**
- CCT SWITCHABLE**
- MULTIWATT SWITCHABLE**
- *PLUG & PLAY LUMINAIRE ACCESSORIES**

Description: STELLAR LED LUMINAIRE, CCT, MULTIWATT

Wattage: 9W/14W/18W

Lumen: 900/1450/1820

Finish: WHITE

Led Type: SMD2835

Colour Temp: 3000K/4000K/6000K

Dimmable: NO

Cri: >80

Beam Angle: 120

Rated Life Hrs: 30,000

Voltage: 230V

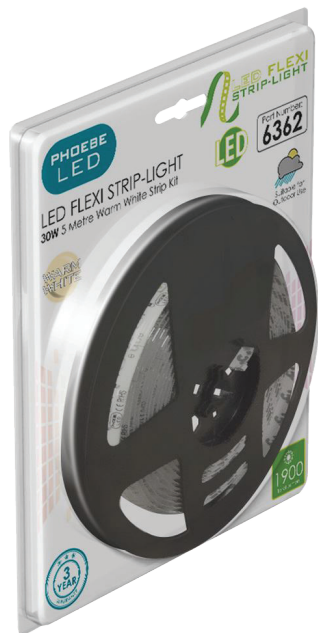
IP rating: IP54

Material: PC



CODE	Description
STRM/CCT	STELLAR LED LUMINAIRE, CCT, MULTIWATT
STRM/CCT/MW/CF	STELLAR LED LUMINAIRE, CCT, MULTIWATT, MW & CF
STRM/CCT/EMG	STELLAR LED LUMINAIRE, CCT, MULTIWATT, EMG
STRMCCT/EMG/MW	STELLAR LED LUMINAIRE, CCT, MULTIWATT EMG & MW
* STRM/CCT/R	STELLAR LED LUMINAIRE, EMG + CF READY
EMG/STR	EMERGENCY PACK FOR ABOVE
CF/STR	MW/CF PACK FOR ABOVE

5M LED STRIPLIGHT KIT



LED STRIPS

**INCLUDES REMOTE CONTROL
(12516 RGB)**

IP65 RATED

20,000 HRS RATED LIFE

**RGB, WARM WHITE & COOL
WHITE OPTIONS**

ACCESSORIES INCLUDED

Wattage:	30W
Dimmable:	NO
Rated life (Hrs):	20,000
Voltage:	240V/24V
IP rating:	IP65
Material:	PC

CODE	Lumen	LED Colour
12493	1800	WARM WHITE
12509	1900	COOL WHITE
12516	N/A	RGB

ALUMINIUM PROFILE FOR ABOVE

CODE	Description
PROF2/V2	2M PROFILE
PROF2/A/V2	2M (ANGLED) PROFILE



LED BULKHEADS

BLACK & WHITE TRIMS INCLUDED

CCT

MULTIWATT

SENSOR OPTIONS

PRE FLEXED + CONNECTOR

- Wattage:** 12W/ 15W / 18W SWITCHABLE
- Lumen:** 1600 MAX
- Finish:** BLACK/WHITE
- Dimensions:** 230x50
- LED type:** SMD2835
- Colour temp:** 3000K/ 4000K/5700K
- Dimmable:** NO
- CRI:** >80
- Beam angle:** 120
- Rated life (Hrs):** 30,000
- Voltage:** 230V
- IP rating:** IP54
- Material:** PC

NOVA BULKHEADS



CODE	Description
NVMB/W/CCT	NOVA LED ROUND BULKHEAD, CCT, MULTIWATT
NVMB/W/CCT/SEN	NOVA LED ROUND BULKHEAD, CCT, MULTIWATT, MW SENSOR
NVTCH	NOVA CHROME TRIM

OSCAR BULKHEADS



LED BULKHEADS

BLACK & WHITE TRIMS INCLUDED

CCT

MULTIWATT

SENSOR OPTIONS

PRE FLEXED + CONNECTOR

Wattage:	9W / 12W / 15W SWITCHABLE
Lumen:	1400 MAX
Finish:	BLACK/WHITE
Dimensions:	230x105x41
LED type:	SMD2835
Colour temp:	3000K/ 4000K/5700K
Dimmable:	NO
CRI:	>80
Beam angle:	120
Rated life (Hrs):	30,000
Voltage:	230V
IP rating:	IP54
Material:	PC

CODE	Description
OSCMB/W/CCT	OSCAR LED OVAL BULKHEAD CCT, MULTIWATT
OSCMB/W/CCT/SEN	OSCAR LED OVAL BULKHEAD, CCT, MULTIWATT, MW SENSOR

**LED BULKHEADS/
 SECURITY**

CCT

ONLY 10W

PIR SENSOR

BLACK & WHITE TRIMS

- Wattage:** 10W
- Lumen:** 1100
- Finish:** BLACK/WHITE
- LED type:** SMD2835
- Colour temp:** 3000K/
4000K/5700K
- Dimmable:** NO
- CRI:** >80
- Beam angle:** 120
- Rated life (Hrs):** 30,000
- Voltage:** 230V
- IP rating:** IP54
- Material:** PC

PIR BULKHEADS



CODE	Description	Dimensions
OS10/CCT/PIR	OSLO LED ROUND BULKHEAD WITH PIR	213x64
OC10/CCT/PIR	OCTO LED OVAL BULKHEAD WITH PIR	213x120x64

RONDA BULKHEADS



LED BULKHEADS

CCT COLOUR SELECTABLE

EYELID FRAME INCLUDED

Description:	18W RONDA BULKHEAD
Wattage:	18W
Lumen:	1600
Finish:	BLACK/OPAL
Dimensions:	300x85
LED type:	SMD2835
Colour temp:	3000K/ 4000K/6000K
Dimmable:	NO
CRI:	>80
Beam angle:	120
Rated life (Hrs):	30,000
Voltage:	230V
IP rating:	IP65
Material:	PC

CODE

Description

R18COMBI/BL/CCT

LED ROUND BULKHEAD

WALLPACKS

CCT

DUAL WATTAGE

EMERGENCY READY

- Wattage:** 20W/30W SWITCHABLE
- Lumen:** 2200 / 3000
- Finish:** BLACK/OPAL
- Dimensions:** 310 x 265 x 122
- LED type:** SMD2835
- Colour temp:** 3000K/ 4000K/6000K
- Dimmable:** NO
- CRI:** >80
- Beam angle:** 120
- Rated life (Hrs):** 30,000
- Voltage:** 230V
- IP rating:** IP65
- Material:** PC

BERLIN LED WALLPACK



CODE	Description
WPDWLED/CCT	LED WALLPACK, CCT
WPDWLED/PC/CCT	LED WALLPACK, CCT, PHOTOCELL
EMG/WP	EMERGENCY PACK

ALDO LED WALLPACK



WALLPACKS

CCT

MULTI WATTAGE

EMERGENCY READY

Wattage:	9W/12W/15W
Lumen:	900/1200/1500
Finish:	BLACK/OPAL
Dimensions:	274x184x69
LED type:	SMD2835
Colour temp:	3000K/ 4000K/6500K
Dimmable:	NO
CRI:	>80
Beam angle:	120
Rated life (Hrs):	30,000
Voltage:	230V
IP rating:	IP65
Material:	PC

CODE	Description
ALDWPLED/CCT	LED WALLPACK, CCT
ALDWPLED/PC/CCT	LED WALLPACK, CCT, PHOTOCELL
EMG/ALDWP	EMERGENCY PACK

LINK FITTINGS

LINKABLE

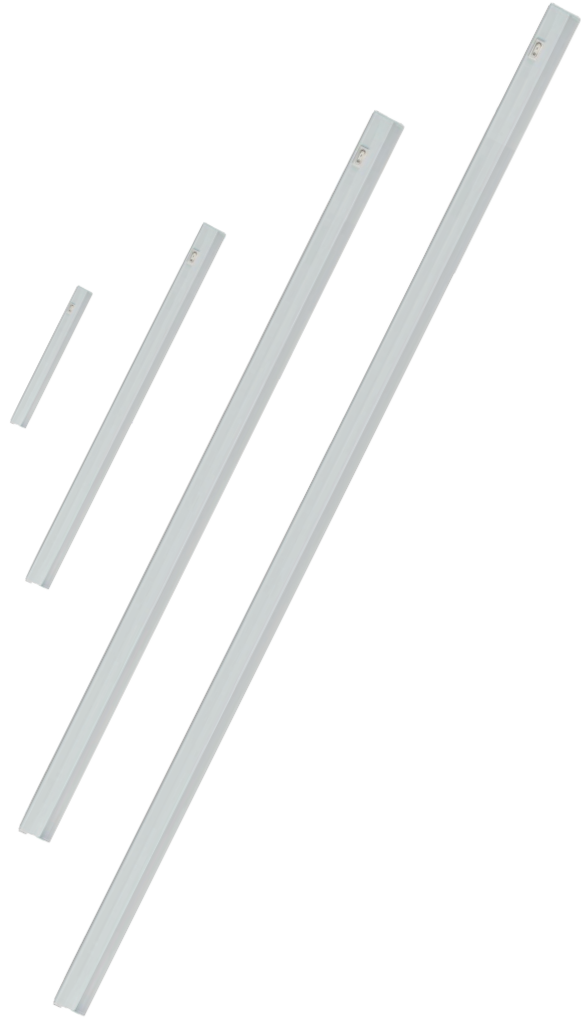
CCT

LINK CABLES INCLUDED

BUTT TO BUTT LINKING

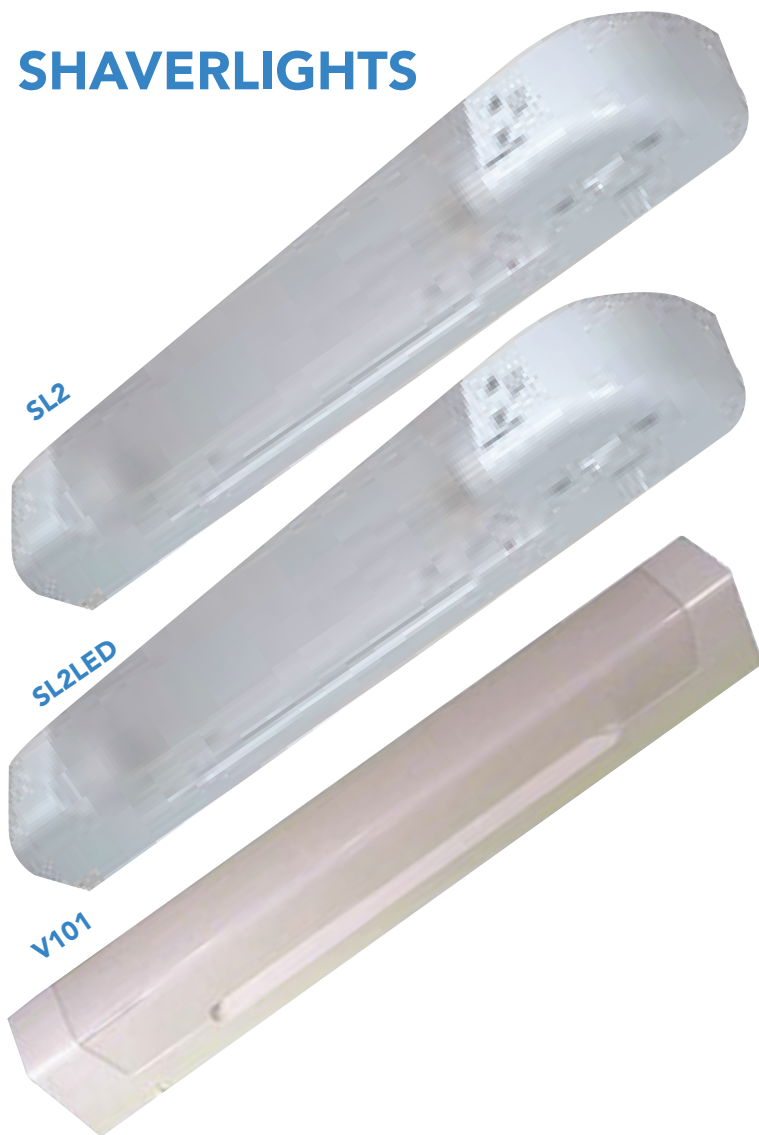
- Finish:** White
- LED type:** SMD2835
- Colour temp:** 3000K/4000K
- Dimmable:** NO
- CRI:** >80
- Beam angle:** 120
- Rated life (Hrs):** 30,000
- Voltage:** 230V
- IP rating:** IP20
- Material:** PC

LINKABLE STRIPLITES



CODE	Description	Wattage	Lumen	Dimensions
LINK3/CCT	3W LED STRIPLITE CCT	3W	300	267x22x31
LINK4/CCT	4W LED STRIPLITE CCT	4W	400	344x22x31
LINK7/CCT	7W LED STRIPLITE CCT	7W	750	517x22x31
LINK14/CCT	14W LED STRIPLITE CCT	14W	1500	905x22x31
LINK18/CCT	18W LED STRIPLITE CCT	18W	1900	1205x22x31

SHAVERLIGHTS



SHAVERLIGHTS

- * **Lumen:** 450
- Finish:** WHITE
- Dimensions:** 495x58x72
- * **LED type:** SMD2835
- * **Colour temp:** 4000K
- * **Dimmable:** NO
- * **CRI:** >80
- * **Beam angle:** 120
- Rated life (Hrs):** 50,000
- Voltage:** 230V
- IP rating:** IP20
- Material:** PC

CODE	Description	Wattage	Dimmable	LED
SL2	60W SHAVERLIGHT	60W	YES	NO
SL2/284LED	SHAVERLIGHT WITH LED TUBE	5W	NO	YES
* SL2LED	LED SHAVERLIGHT	7W	NO	YES
V101/LED	STRIPLITE WITH LED TUBE	5W	NO	YES
V101	STRIPLITE	60W	Yes	NO

SLIMLINE

LED SLIMLINE FIXTURES

- CCT**
- MULTIWATT**
- COMPACT DESIGN**
- INSTANT START**
- FLICKER FREE**

Finish: White
LED type: SMD2835
Colour temp: 3000K / 4000K / 6000K
Dimmable: NO
CRI: >80
Beam angle: 120
Rated life (Hrs): 30,000
Voltage: 230V
IP rating: IP20
Material: PC



CODE	Description	Wattage	Lumen Max	Dimensions
Z760M/CCT	2 FT LED SLIMLINE FIXTURE	10/13/16W	2080	600x75x25
Z790M/CCT	3 FT LED SLIMLINE FIXTURE	16/18/20W	2600	900x75x25
Z7120M/CCT	4 FT LED SLIMLINE FIXTURE	24/28/32W	4160	1200x75x25
Z7150M/CCT	5 FT LED SLIMLINE FIXTURE	30/35/40W	5200	1500x75x25

LED BATTEN



COMMERCIAL

**REPLACEMENT FOR
TRADITIONAL BATTEN**

FLICKER FREE OPERATION

COLOUR TEMP SELECTABLE

Wattage:	32W
Lumen:	4000
Finish:	WHITE
Dimensions:	1454x59x74
LED type:	SMD2835
Colour temp:	3000K/ 4000K/6000K
Dimmable:	NO
CRI:	>80
Beam angle:	120
Rated life (Hrs):	30,000
Voltage:	230V
IP rating:	IP20
Material:	PC/ALUMINIUM

CODE

Description

BF32/CCT

LED SINGLE BATTEN FITTING

COMMERCIAL

SLIMLINE DESIGN

CCT

EMERGENCY READY

Wattage:	58W
Lumens:	7250
Finish:	White
Dimensions:	1490x200x81
LED type:	SMD2835
Colour temp:	3000K / 4000K / 6000K
Dimmable:	NO
CRI:	>80
Beam angle:	120
Rated life (Hrs):	30,000
Voltage:	230V
IP rating:	IP65
Material:	Steel.PC

LED FLATBACK



CODE	Description
FB58/CCT	LED FLATBACK FITTING CCT
EMG/FB	EMERGENCY PACK FOR ABOVE

LED 110V CONNECTABLE HARNESS



SITE

20 X HEADS

ONLY 5W PER HEAD

IP44 RATED

42M FESTOON

CONNECTABLE UP TO 84M

Wattage: 5W / Head
Lumen: 8500
Colour temp: 4000K
Dimmable: NO
Voltage: 110V

CODE

Description

H42/110

42M 110V FESTOON 20 LITE

110V CORROSION PROOF FITTING

SITE

EMERGENCY READY

Wattage:	30W
Lumen:	3900
Finish:	Yellow
Dimensions:	1500x95x75
LED type:	SMD2835
Colour temp:	4000K
Dimmable:	NO
CRI:	>80
Beam angle:	120
Rated life (Hrs):	50,000
Voltage:	110V
IP rating:	IP65
Material:	PC



CODE	Description
CP30LED/110	110V 30W LED CORROSION PROOF, EMG READY
EMG/CP	EMERGENCY PACK FOR ABOVE

CORROSION PROOFS



INDUSTRIAL

IP65 RATED

EMERGENCY READY

SENSOR READY

STANDARD AND SLIMLINE SIZES

Finish:	GREY/OPAL
Led Type:	SMD2835
Dimmable:	NO
CRI:	>80
Beam Angle:	120
Rated Life Hrs:	30,000
Voltage:	240V
IP rating:	IP65
Material:	PC

CODE	Description	Wattage	Lumen	Dimensions	Colour Temp
CP57LED	57W LED TWIN CORROSION PROOF	57W	7400	1528x104x72	5000K
CP57LED/SL	57W LED SLIMLINE CORROSION PROOF	57W	7400	1528x85x78	5000K
CP25LED	25W LED SINGLE CORROSION PROOF	25W	2500	1565x81x68	4000K
EMG/CP	EMERGENCY PACK FOR ABOVE				
MW/CP	MICROWAVE SENSOR FOR ABOVE				

FLOODLIGHTING

MODERN SLEEK DESIGN

IP65 FITTING & IP65 SENSOR

MANUAL OVERRIDE

EASY MOUNT BRACKET

- Finish:** BLACK
- Led Type:** SMD2835
- Colour Temp:** 4000K
- Dimmable:** NO
- Cri:** >80
- Beam Angle:** 110
- Rated Life Hrs:** 30,000
- Voltage:** 230V
- IP rating:** IP65
- Material:** ALUMINIUM
- PIR Angle:** 120°
- PIR Range:** 10-12M



Challenger LED Floodlights

CODE	Description	Wattage	Lumen
Z10FL	10W LED FLOODLIGHT	10W	900
Z30FL	30W LED FLOODLIGHT	30W	2500
Z50FL	50W LED FLOODLIGHT	50W	4150

Challenger LED PIR Floodlights

CODE	Description	Wattage	Lumen
Z10FL/PIR	10W LED FLOODLIGHT WITH PIR	10W	900
Z30FL/PIR	30W LED FLOODLIGHT WITH PIR	30W	2500
Z50FL/PIR	50W LED FLOODLIGHT WITH PIR	50W	4150

ALUMINIUM FLOODLIGHTS



FLOODLIGHTING

- PREWIRED 1M FLEX
- SLIM PROFILE
- IP65 RATED
- DIE CAST ALUMINIUM
- DUAL VOLTAGE
- EASY MOUNT BRACKET

Finish:	BLACK
Dimmable:	NO
Cri:	>80
Rated Life Hrs:	25,000
Voltage:	230/110V
Material:	ALUMINIUM

CODE	Description	Wattage	Lumen	Colour Temp	Dimensions
TG40-50W	50W LED FLOODLIGHT	50W	4500	5000K	275x220x32
TG40-100W	100W LED FLOODLIGHT	100W	9000	5000K	345x280x57
TG40-150W	150W LED FLOODLIGHT	150W	13500	5000K	380x310x70
TG40-200W	200W LED FLOODLIGHT	200W	18000	5000K	418x350x80
TG40-300W	300W LED FLOODLIGHT	300W	27000	5000K	470x395x95
TG40-50W/2K	50W LED FLOODLIGHT	50W	4200	2000K	275x220x32
TG40-100W/2K	100W LED FLOODLIGHT	100W	8400	2000K	345x280x57
TG40-50W/2K/PC	50W LED FLOODLIGHT 2K, WITH PHOTOCELL	50W	4200	2000K	275x220x32
TG40-50W/5K/PC	50W LED FLOODLIGHT 5K, WITH PHOTOCELL	50W	4500	5000K	275x220x32
TG40-100W/2K/PC	100W LED FLOODLIGHT 2K, WITH PHOTOCELL	100W	8400	2000K	345x280x57
TG40-100W/5K/PC	100W LED FLOODLIGHT 5K, WITH PHOTOCELL	100W	9000	5000K	345x280x57

FLOODLIGHTING

**POLYCARBONATE
 FLOODLIGHTS**

- COASTAL FRIENDLY**
- PC CONSTRUCTION**
- IP65 RATED**
- DUAL VOLTAGE**

- Finish:** BLACK
- Colour Temp:** 5000K
- Dimmable:** NO
- Cri:** >80
- Rated Life Hrs:** 25,000
- Voltage:** 230/110V
- Material:** PC



CODE	Description	Wattage	Lumen	Dimensions
FL30LED	LED POLYCARBONATE FLOODLIGHT	30W	3000	135x179x80
FL50LED	LED POLYCARBONATE FLOODLIGHT	50W	5000	213x319x80
FL100LED	LED POLYCARBONATE FLOODLIGHT	100W	10000	268x319x80

RGB FLOODLIGHTS



FLOODLIGHTING

WITH REMOTE CONTROL

IP65

RED, BLUE, GREEN COLOUR
 OPTIONS

MEMORY FUNCTION

Finish:	BLACK
Colour Temp:	RGB
Dimmable:	NO
Cri:	>80
Rated Life Hrs:	25,000
Voltage:	230V
IP rating:	IP65
Material:	ALUMINIUM

CODE	Description	Wattage	Lumen	Dimensions
TG68/50/RGB	LED RGB FLOODLIGHT	50W	UP TO 3956	190x220x55
TG68/100/RGB	LED RGB FLOODLIGHT	100W	UP TO 7931	255x280x70
TG68/200/RGB	LED RGB FLOODLIGHT	200W	UP TO 14202	305x350x90

SOLAR

- WITH REMOTE CONTROL
- MICROWAVE SENSOR
- POLYCARBONATE BODY
- HIGH GRADE SOLAR PANEL
- TIME FUNCTION
- AUTO PROGRAM
- PHOTOCELL
- CHARGE & DISCHARGE 2000 TIMES
- DISCHARGE 10-12HOURS
- CAPACITY 5V-15W
- TIME FUNCTION 3/5/8HRS

- Finish:** GREY
- Led Type:** SMD5050
- Colour Temp:** 4000K
- Dimmable:** NO
- Cri:** >80
- Beam Angle:** 90
- Rated Life Hrs:** 20,000
- IP rating:** IP65
- Material:** PC

SOLAR FLOODLIGHTS



CODE	Description	Wattage	Lumen	Dimensions
TK09-100W	LED SOLAR FLOODLIGHT	100W	800	215x44x257
TK09-200W	LED SOLAR FLOODLIGHT	200W	1500	249x49x290

LED HI BAY



INDUSTRIAL

MULTIWATT SELECTABLE

CCT SELECTABLE

**EMERGENCY & MICROWAVE
 ACCESSORIES AVAILABLE**

Wattage:	140W/ 160W/200W
Lumen:	19600/ 22400/28000
Finish:	BLACK
Dimensions:	330x168
Led Type:	SMD2835
Colour Temp:	3000/ 4000/6000K
Cri:	>80
Beam Angle:	120
Rated Life Hrs:	30,000
Voltage:	230V
IP rating:	IP65
Material:	ALUMINIUM

CODE	Description
HBM/CCT	LED HI BAY, MULTIWATT,CCT
HB/MW	MICROWAVE SENSOR FOR LED HI BAY
HRC/O5	REMOTE CONTROLLER FOR LED MICROWAVE
HB/EMG	EMERGENCY PACK FOR LED HI BAY
HB/BR	BRACKET HOLDER FOR EMERGENCY PACK

OFFICE LIGHTING

INSTANT NON FLICKER LIGHT

BACKLIT DESIGN

EMERGENCY PACKS AVAILABLE

CCT

- Finish:** WHITE
- Led Type:** SMD2835
- Colour Temp:** 3000/
4000/6000K
- Dimmable:** NO
- Cri:** >80
- Beam Angle:**
- Rated Life Hrs:** 30,000
- Voltage:** 230V
- IP rating:** IP20
- Material:** ALUMINIUM

LED PANELS

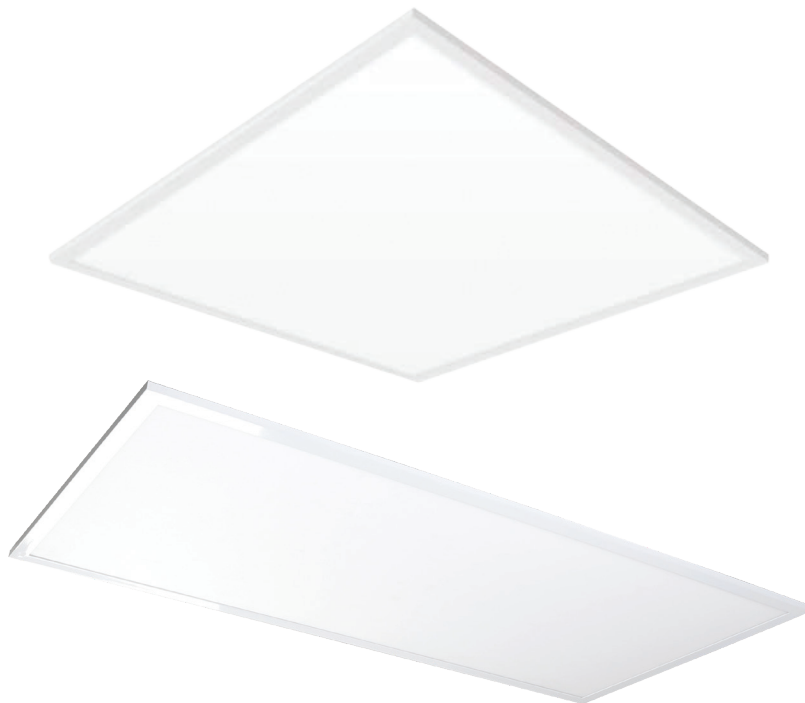


CODE	Description	Wattage	Lumen	Dimensions
R6LED40/CCT	40W LED 600x600 PANEL, CCT	40W	4000	595x595x10
R3LED40/CCT	40W LED 1200x300 PANEL, CCT	40W	4000	1195x295x10
R12LED50/CCT	50W LED 1200x600 PANEL, CCT	50W	5000	1195x595x10

ACCESSORIES

CODE	Description
SB600/BL/V2	R6 SURFACE KIT
SB1200/BL/V2	R12 SURFACE KIT
EMG/R6	EMERGENCY PACK FOR R6 + R3
EMG/R12	EMERGENCY PACK FOR R12
R6DRIVE/CCT	REPLACEMENT DRIVER FOR R6&R3 PANEL
R12DRIVE/CCT	REPLACEMENT DRIVER FOR R12 PANEL

LED PANELS UGR



OFFICE LIGHTING

MULTIWATT SELECTABLE

CCT SELECTABLE

EMERGENCY PACKS AVAILABLE

UGR TYPE

Finish: WHITE
Led Type: SMD2835
Colour Temp: 3000/
 4000/6000K
Dimmable: NO
Cri: >80
Beam Angle:
Rated Life Hrs: 30,000
Voltage: 230V
IP rating: IP20
Material: ALUMINIUM

CODE	Description	Wattage	Lumen	Dimensions
R6LED40/CCT/ UGR	40W LED 600x600 PANEL, CCT, UGR	40W	4000	595x595x10
R3LED40/CCT/ UGR	40W LED 1200x300 PANEL, CCT,UGR	40W	4000	1195x295x10
R12LED50/CCT/ UGR	50W LED 1200x600 PANEL, CCT, UGR	50W	5000	1195x595x10

CODE	Description
EMG/R6	EMERGENCY PACK FOR R6 + R3
EMG/R12	EMERGENCY PACK FOR R12

EMERGENCY

Finish: WHITE
Led Type: SMD2835
Dimmable: NO
Cri: NA
Beam Angle: NA
Rated Life Hrs: 25,000
Voltage: 240V
Material: STEEL/PC

EMERGENCY LIGHTING



LEXMLED/V2



BH1A1/M/NM



ETSLED



BLEX4



13995

CODE	Description	Wattage	Lumen	Dimensions	Colour Temp	IP Rating
LEXMLED/V2	LED EXIT BOX	3W	N/A	390x190x50	4000K	IP20
BH1A1/M/NM	LED EMERGENCY BULKHEAD	3.2W	N/A	342x110x65	6000K	IP65
ETSLED	LED EMERGENCY TWIN SPOT	4.5W	400	250x56x280	6000K	IP20
BLEX4	EMERGENCY BLADE FIXTURE	4w	N/A	332x195x16	6000k	IP20
13995	IP65 TWIN SPOT	2.3W	400	300x294x82		IP65

EMERGENCY LIGHTING



2EDLNM



LRLEDNM

EMERGENCY

Finish:	WHITE
Led Type:	SMD2835
Dimmable:	NO
Cri:	NA
Beam Angle:	NA
Rated Life Hrs:	25,000
Voltage:	240V
Material:	ALUMINIUM

CODE	Description	Wattage	Lumen	Dimensions	Colour Temp	IP Rating
2EDLNM	LED EMERGENCY DOWNLIGHT SELF TEST	2W	130	52x25 CUTOUT 48	6000K	IP20
LRLEDNM	LED RECESSED EMERGENCY BULKHEAD	3W	190	410x125x78 CUTOUT 320x112	4000K	IP20

EXTERIOR

BULKHEADS



CODE	Description	Dimensions	IP Rating	Cap
P100BH	100W RECTANGULAR BULKHEAD BLACK	245x125	IP54	BC/B22
P100BHW	100W RECTANGULAR BULKHEAD WHITE	245x125	IP54	BC/B22



P8 LED BULKHEAD

CODE	Description	Dimensions	IP Rating
P8LEDBL	8W LED RECTANGULAR BLACK	245x125x114	IP65
P8LEDWH	8W LED RECTANGULAR WHITE	245x125x114	IP65

Wattage: 8W
Lumens: 550
Colour Temp: 4000K
Life: 25,000

GLOBES



BATHROOM

Finish:	WHITE
Cri:	>80
Voltage:	230V
IP rating:	IP44
Cap:	B22/BC
Material:	BAKELITE/ GLASS

CODE	Description	Wattage
B60WPC	60W BATHROOM GLOBE	60W
B100WPC	100W BATHROOM GLOBE	100W

LANTERN



EXTERIOR

Wattage:	100W
Voltage:	230V
Cap:	E27/ES
Material:	PC

CODE	Description	Dimensions	IP Rating
PHLBL	HALF LANTERN BLACK, E27	360x180x133	IP44

EXTERIOR

Wattage: 60W
Voltage: 240V
Cap: E27
Finish: Black
IP Rating: IP44

LANTERNS



ADJUSTABLE UP/DOWN LANTERN, BLACK

CODE	Description	Dimensions	Material
PH631	ADJUSTABLE UP/DOWN LANTERN, BLACK	402x261	PC

NOVEL LANTERN DESIGN

LED TECHNOLOGY IN A LANTERN

POLYCARBONATE CONSTRUCTION

UV TREATED

MAINTENANCE FREE

Wattage: 9W
Lumen: 500
Colour Temp: 3000K
CRI: >80
Life (HRS): 25,000
Volts: 240V
IP Rating: IP44



CORSA LED LANTERN

CODE	Description	Dimensions	Material
P816LED	CORSA LED LANTERN	250x181	PC

LANTERNS



CODE	Description	Type
P406LED	NERO LED LANTERN	STD
P406LED/PIR	NERO LED PIR LANTERN	PIR
P746LED	AUSTIN LED LANTERN	STD

EXTERIOR

LED TECHNOLOGY IN A LANTERN

POLYCARBONATE CONSTRUCTION

UV TREATED

MAINTENANCE FREE

Wattage:	8W
Lumen:	400
LED Type:	SMD2835
Colour Temp:	3000K
Life (HRS):	25,000
Cri:	>80
Voltage:	240V
IP rating:	IP44
Material:	PC

PIR Spec:

Range 1m – 8m

Detection angle 120°

Hold time 90 Seconds

**Light control ≤ 30LUX Start
 ≥ 80LUX Stop**

EXTERIOR

Wattage: 100W
Material: STAINLESS
STEEL/PC
Cap: E27
Voltage: 230V

STAINLESS STEEL BOLLARDS



CODE	Description	Dimensions
ST154/450	TORAS BOLLARD	450x150MM
ST154/650	TORAS BOLLARD	650x150MM

POLYCARBONATE BOLLARDS



EXTERIOR

Wattage:	100W
Finish:	BLACK
Voltage:	230V
Material:	PC
IP Rating:	IP65
Cap:	E27

CODE	Description	Dimensions
BOL/450	POLYCARBONATE BOLLARD 450MM	450x201
BOL/650	POLYCARBONATE BOLLARD 650MM	650x201

EXTERIOR

Wattage:	10W
Lumen:	300
Finish:	BLACK
Led Type:	SMD2835
Colour Temp:	3000K
Dimmable:	NO
Cri:	>80
Beam Angle:	120
Rated Life Hrs:	30,000
Voltage:	230V
IP rating:	IP44
Material:	ALUMINIUM

LED BOLLARDS



S598/450



S598/650



S598

CODE	Description	Dimensions
S598/450	LED ALUMINIUM BOLLARD 450MM	450x105
S598/650	LED ALUMINIUM BOLLARD 650MM	650x105
S598	LED WALL FIXTURE	210x130

PVC WALL SPOTS



P1600

P1602

EXTERIOR

LED LAMPS INCLUDED

COASTAL FRIENDLY

Finish:	BLACK
Voltage:	230V
IP rating:	IP44
Cap:	GU10
Material:	PC

CODE	Description	Wattage	Dimensions
P1600	UP/DOWN WALL SPOT	2x8W	158x87
P1602	FIXED WALL SPOT	8W	120x87

EXTERIOR

304 GRADE STAINLESS STEEL

304 STRONG CORROSION RESISTANCE

- Finish:** SATIN CHROME
- Cap:** GU10
- Wattage:** 35W MAX
- Voltage:** 230V
- IP Rating:** IP54
- Material:** 304S/S

304 GRADE STAINLESS STEEL WALL SPOTS



OMF1/304



OMF2/304



OMF3/304

CODE	Description	Wattage	Dimensions
OMF1/304	FIXED WALL SPOT	35W	110x65
OMF2/304	UP/DOWN WALL SPOT	2x35W	175x65
OMF3/304	DIRECTIONAL WALL SPOT	35W	140x65

SURFACE/SPIKE SPOTS



PSH1HC



SH1HC



SF503



SF808A

EXTERIOR

Finish: BLACK
Cap: GU10
Voltage: 230V

SF808A
Wattage: 5W
Led Type: SMD2835
Colour Temp: 3000K
Lumens: 420

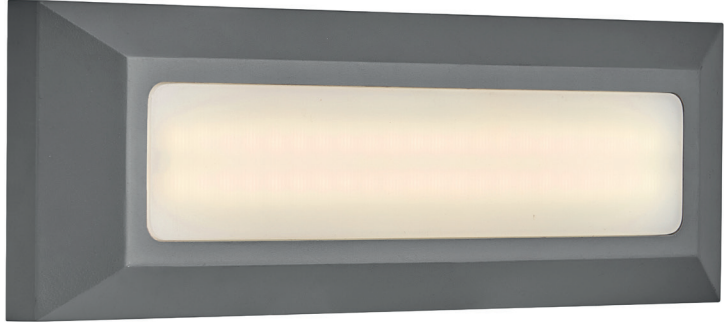
CODE	Description	Wattage	Dimensions	IP Rating	Material
PSH1HC	GU10 SPIKE SPOT	8W	330x97	IP65	PC
SH1HC	GU10 SPIKE SPOT	50W	330x97	IP65	ALUMINIUM
SF503	GU10 SPIKE SPOT	7W	175x78	IP54	NYLON
SF808A	5W LED SPIKE SPOT	5W	90x56	IP54	NYLON

EXTERIOR

LED SURFACE FIXTURES

- WEATHER RESISTANT MATERIAL**
- CCT COLOUR SWITCHABLE**
- COASTAL FRIENDLY**

- Wattage:** 4W
- Lumen:** 180
- Finish:** DARK GREY
- Dimensions:** 80x230x35
- LED type:** SMD2835
- Colour temp:** 3000K/
4000K/6000K
- Dimmable:** NO
- CRI:** >80
- Voltage:** 230V
- IP rating:** IP65
- Material:** PC



CODE	Description
P2301/DG/CCT	SURFACE LED FITTING
P2302/DG/CCT	SURFACE LED FITTING INDIRECT

LED SIGN LIGHTING



EXTERIOR

**DESIGNED FOR 20MM
 CONDUIT**

MAINTENANCE FREE

POLYCARBONATE FINISH

Wattage:	17W
Lumen:	1560
Finish:	BLACK
Dimensions:	180x230x85
LED type:	SMD2835
Colour temp:	6500K
Dimmable:	NO
CRI:	>80
Voltage:	230V
IP rating:	IP54
Material:	PC

CODE	Description
SLLED	LED SIGNLIGHT

EXTERIOR

LED DECK LIGHTING

PREWIRED

MAINS VOLTAGE

- Wattage:** 0.3W
- Lumen:** 36
- Finish:** SATIN CHROME
- Dimensions:** 40x35
- LED type:** SMD2835
- Dimmable:** NO
- CRI:** >80
- Beam Angle:** 120
- Voltage:** 230V
- IP rating:** IP67
- Material:** PC/ALUMINIUM



CODE	Description	Colour Temp
VLS2147/3K	MAINS DECK LIGHT	3000K
VLS2147/4K	MAINS DECK LIGHT	4000K

ROBUST STAINLESS STEEL FINISH

MAINS VOLTAGE

LOOP 2 ENTRY GLANDS

- Wattage:** 35W
- Finish:** STAINLESS STEEL
- Cap:** GU10
- Dimensions:** 100x35
- Voltage:** 230V
- IP rating:** IP67
- Material:** PC/ALUMINIUM

GROUND LIGHT



CODE	Description
GLGU10	GU10 GROUND FIXTURE

LED MIRRORS



HC1015



HC1011

BATHROOM

CCT

DIMMABLE

ANTIFOG

MEMORY

IP44 RATED

Wattage:	24W
Lumen:	1200
Finish:	MIRROR
LED type:	SMD2835
Colour temp:	3000K/ 4000K/6000K
Dimmable:	YES
CRI:	>80
Rated Life Hrs:	30,000
Voltage:	230V
IP rating:	IP44
Material:	GLASS/PC/ ALUMINIUM

CODE	Description	Dimensions
HC1015	PORTRAIT LED MIRROR	800x600x20
HC1011	CIRCULAR LED MIRROR	600x20

BATHROOM

- CCT
- DIMMABLE
- ANTIFOG
- MEMORY
- IP44 RATED

Wattage: 20W
Lumen: 1500
Finish: MIRROR
LED type: SMD2835
Colour temp: 3000K-6500K
Dimmable: YES
CRI: >80
Beam angle: 120
Voltage: 230V
IP rating: IP44
Material: GLASS/PC

LED MIRRORS



M700/CCT



M600/CCT

CODE	Description	DIMENSIONS
M600/CCT	CIRCULAR LED MIRROR	600x32
M700/CCT	RECTANGULAR LED MIRROR	700x600x32

CABINET MIRROR



BATHROOM

LIGHT FROM TOP BOTTOM & FRONT

MIRROR ON BACK OF DOORS

MIRROR ON SIDES

ANTIFOG HEATER

DIMMABLE CCT

SHAVER SOCKET

USB SOCKET

Wattage:	41W
Lumen:	1000
Finish:	MIRROR
Dimensions:	40x35
LED type:	SMD2835
Colour temp:	3000K/ 4000K/6000K
Dimmable:	YES
CRI:	>80
Rated life Hrs:	25,000
Voltage:	230V
IP rating:	IP44
Material:	ALUMINIUM/ GLASS

CODE

Description

CABLED/880

LED CABINET FIXTURE

BATTERY LED

MOTION & LIGHT SENSOR

BATTERIES INCLUDED

CCT

ANTI BACTERIAL COATING

NITELIGHT

- Wattage:** .45W
- Lumen:** 20 MAX
- Finish:** WHITE
- Dimensions:** 84x30
- Colour temp:** 2800K/5200K
- Dimmable:** NO
- CRI:** >80
- Voltage:** 3V
- Display Box:** 18pcs

SMARTLIGHT



CODE	Description
SML233	LED BATTERY OPERATED SMART LIGHT

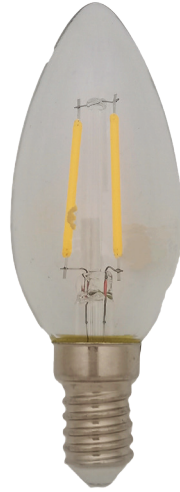
LAMPS



EVOLAMP LED FILAMENT CANDLE LAMPS

EVOLAMP

DIMMABLE	YES
CRI	>80
RATED LIFE	(70B50) 10,000hr
VOLTAGE	AC50Hz 240v
MATERIAL	CLEAR GLASS
LED TYPE	FILAMENT



FILCAN2SES



FILCAN5SES/4K

CODE

FILCAN5E12

FILCAN2BC

FILCAN2SES

FILCAN2ES

FILCAN5BC

FILCAN5SES

FILCAN5ES

FILCAN5SBC

CODE

FILCAN5BC/4K

FILCAN5SES/4K

LUMENS		COLOUR TEMP		DIMENSIONS	
2W	250lm	2700K WARM WHITE		BC	91 x 35mm
5W	470lm			ES	93 x 35mm
				SBC	95 x 35mm
				SES	97 x 35mm
				E12	97 x 35mm

LUMENS		COLOUR TEMP		DIMENSIONS	
5W	470lm	4000K COOL WHITE		BC	91 x 35mm
				SES	97 x 35mm

EVOLAMP LED FILAMENT GOLFBALL LAMPS



FILGOL2BC



FILGOL5SES

LUMENS	
2W	250lm
5W	470lm

COLOUR TEMP
2700K WARM WHITE

DIMENSIONS	
BC	76 x 45mm
SES	80 x 45mm
ES	80 x 45mm
SBC	78 x 45mm

EVOLAMP

DIMMABLE	YES
CRI	>80
RATED LIFE	(70B50) 10,000hr
VOLTAGE	AC50Hz 240v
MATERIAL	GLASS
LED TYPE	FILAMENT

CODE

- FILGOL2BC**
- FILGOL2SES**
- FILGOL2ES**

- FILGOL5BC**
- FILGOL5SES**
- FILGOL5ES**
- FILGOL5SBC**

EVOLAMP LED FILAMENT ANTIQUE LAMPS

EVOLAMP

DIMMABLE	YES
CRI	>80
RATED LIFE	(70B50) 10,000hr
VOLTAGE	AC50Hz 240v
MATERIAL	GLASS
LED TYPE	FILAMENT



FILAQCAN5BC FILAQ7ES FILAQST64BC FILAQGL7ES FILAQG125BC

CODE

FILAQCAN5BC
FILAQCAN5SES
FILAQCAN5ES

Candle

LUMENS		COLOUR TEMP		DIMENSIONS	
5W	410lm	2200K EXTRA WARM WHITE		BC	91 x 35mm
				SES	97 x 35mm
				ES	95 x 35mm

CODE

FILAQ7BC
FILAQ7ES

GLS

LUMENS		COLOUR TEMP		DIMENSIONS	
7.5W	638lm	2200K EXTRA WARM WHITE		BC	102 x 60mm
				ES	104 x 60mm

CODE

FILAQST647BC
FILAQST647ES

ST64

LUMENS		COLOUR TEMP		DIMENSIONS	
7.5W	638lm	2200K EXTRA WARM WHITE		BC	138 x 64mm
				ES	140 x 64mm

CODE

FILAQGL7BC
FILAQGL7ES

G95

LUMENS		COLOUR TEMP		DIMENSIONS	
7.5W	638lm	2200K EXTRA WARM WHITE		BC	138 x 95mm
				ES	138 x 95mm

CODE

FILAQG125BC
FILAQG125ES

G125

LUMENS		COLOUR TEMP		DIMENSIONS	
7.5W	638lm	2200K EXTRA WARM WHITE		BC	175 x 125mm
				ES	175 x 125mm

EVOLAMP LED FILAMENT CLEAR LAMPS



FIL7BC

FILST64ES

FILGL7BC

FILG125ES

GLS

LUMENS		COLOUR TEMP	DIMENSIONS	
7.5W	806lm	2700K WARM WHITE	BC	102 x 60mm
			ES	104 x 60mm

ST64

LUMENS		COLOUR TEMP	DIMENSIONS	
7.5W	806lm	2700K WARM WHITE	BC	138 x 64mm
			ES	140 x 64mm

G95

LUMENS		COLOUR TEMP	DIMENSIONS	
7.5W	806lm	2700K WARM WHITE	BC	138 x 95mm
			ES	138 x 95mm

G125

LUMENS		COLOUR TEMP	DIMENSIONS	
7.5W	806lm	2700K WARM WHITE	BC	175 x 125mm
			ES	175 x 125mm

EVOLAMP

DIMMABLE	YES
CRI	>80
RATED LIFE	(70B50) 10,000hr
VOLTAGE	AC50Hz 240v
MATERIAL	GLASS
LED TYPE	FILAMENT

CODE

FIL7BC
FIL7ES

CODE

FILST64BC
FILST64ES

CODE

FILGL7BC
FILGL7ES

CODE

FILG125BC
FILG125ES

EVOLAMP

EVOLAMP LED GU10 LAMPS

CRI	>80
RATED LIFE	(70B50) 10,000hr
VOLTAGE	AC50Hz 240v
MATERIAL	TP/GLASS
LED TYPE	SMD2835



EVGU102LED/3K



EVGU106LED/4K

CODE

- EVGU102LED/3K
- EVGU102LED/4K

LUMENS		COLOUR TEMP	DIMENSIONS
2W	160lm	3000K WARM WHITE	53 x 50mm
2W	180lm	4000K COOL WHITE	
DIMMABLE			
NO			

CODE

- EVGU105LED/3K
- EVGU105LED/4K

LUMENS		COLOUR TEMP	DIMENSIONS
5W	430lm	3000K WARM WHITE	55 x 50mm
5W	450lm	4000K COOL WHITE	
DIMMABLE			
NO			

Dimmable

CODE

- EVGU106LEDDIM/3K
- EVGU106LEDDIM/4K

LUMENS		COLOUR TEMP	DIMENSIONS
6W	520lm	3000K WARM WHITE	57 x 50mm
6W	540lm	4000K COOL WHITE	
DIMMABLE			
YES			

EVOLAMP LED DIMMABLE THERMAL PLASTIC LAMPS



TPDCAN5BC



TPDGB5SES



TPDGLS15ES/3K

Candle

LUMENS		COLOUR TEMP	DIMENSIONS	
5W	400lm	3000K WARM WHITE	BC	98 x 35mm
			SBC	98 x 35mm
			ES	98 x 35mm
			SES	98 x 35mm

Golf Ball

LUMENS		COLOUR TEMP	DIMENSIONS	
5W	400lm	3000K WARM WHITE	BC	78 x 45mm
			SBC	78 x 45mm
			ES	78 x 45mm
			SES	78 x 45mm

GLS

LUMENS		COLOUR TEMP	DIMENSIONS	
15W	1200lm	3000K WARM WHITE		125 x 65mm
		4000K COOL WHITE		125 x 65mm

EVOLAMP

DIMMABLE	YES
CRI	>80
RATED LIFE	(70B50) 10,000hr
VOLTAGE	AC50Hz 240v
MATERIAL	TP
LED TYPE	SMD2835

CODE

TPDCAN5BC
TPDCAN5SBC
TPDCAN5ES
TPDCAN5SES

CODE

TPDGB5BC
TPDGB5SBC
TPDGB5ES
TPDGB5SES

CODE

TPDGLS15BC/3K
TPDGLS15ES/3K

TPDGLS15BC/4K
TPDGLS15ES/4K

EVOLAMP LED THERMAL PLASTIC LAMPS

EVOLAMP

DIMMABLE	NO
CRI	>80
RATED LIFE	(70B50) 15,000hr
VOLTAGE	110-240V AC50Hz
MATERIAL	TP
LED TYPE	SMD2835



EVGLSLED10BC/3K

CODE

EVGLSLED10BC/3K
EVGLSLED10ES/3K

LUMENS		COLOUR TEMP	DIMENSIONS	
10W	820lm	3000K WARM WHITE	BC	91 x 35mm
			ES	95 x 35mm

EVOLAMP LED G9 DIMMABLE LAMPS



G9LEDWW

G9

LUMENS		COLOUR TEMP	DIMENSIONS
3W	260lm	2700K WARM WHITE	50 x 15mm
3W	270lm	4000K COOL WHITE	

EVOLAMP

DIMMABLE	YES
CRI	>80
RATED LIFE	(70B50) 15,000hr
VOLTAGE	AC50Hz 240v
MATERIAL	PC
LED TYPE	SMD2835

CODE

G9LEDWW
G9LEDCW

EVOLAMP

EVOLAMP LED STRIP TUBE LAMPS

DIMMABLE	NO
CRI	>80
RATED LIFE	(70B50) 10,000hr
VOLTAGE	AC50Hz 240v
MATERIAL	TP
LED TYPE	SMD2835



E221LED



S19LED/V2



Q352LED

CODE
E221LED
E284LED

LUMENS		COLOUR TEMP	DIMENSIONS	
3W	200lm	2700K WARM WHITE	E221LED	221 x 26mm
5W	300lm		E284LED	284 x 26mm
		RATED LIFE (70B50)		
		30,000hr		

CODE
S19LED/V2

LUMENS		COLOUR TEMP	DIMENSIONS	
9W	500lm	3000K WARM WHITE	310 x 38mm	
		RATED LIFE (70B50)		
		25,000hr		

CODE
Q352LED
Q602LED

LUMENS		COLOUR TEMP	DIMENSIONS	
5W	408lm	3000K WARM WHITE	Q352LED	300 x 30mm
7W	450lm		Q602LED	500 x 30mm
		RATED LIFE (70B50)		
		25,000hr		

T8 LED TUBES



EVOLAMP

SIZES 2FT–5FT

WIRE DIRECT TO MAINS

CCT SWITCHABLE

3000K / 4000K / 6500K

NON DIMMABLE

CODE	DESCRIPTION	WATTAGE	LUMENS	DIMENSIONS
T82LED/CCT	2ft LED Tube CCT Switchable	9W	900	600x28
T83LED/CCT	3ft LED Tube CCT Switchable	12W	1200	900x28
T84LED/CCT	4ft LED Tube CCT Switchable	18W	1850	1200x28
T85LED/CCT	5ft LED Tube CCT Switchable	24W	2500	1500x28



EVOLAMP

DIMMABLE NO
CRI >80
VOLTAGE AC50Hz
240v

EVOLAMP LED LAMPS



12677



P38LED15/3k



GX53



ECH4LED



PYFLED



CRLED

CODE	WATTAGE	LUMEN	COLOUR TEMP	RATED LIFE HRS	MATERIAL	DIMENSIONS	CAP
12677	7	806	2700K	15,000	GLASS	138 x 95	ES
P38LED15/3K	15	1280	3000K	25,000	GLASS	130 x 124	ES
GX53/6/WW	6	450	2700K	25,000	TP	75 x 28	GX53
GX53/5/CW	5	450	4000K	25,000	TP	75 x 28	GX53
ECH4LED	4	130	2700K	10,000	TP	65 x 30	E14
PYFLED	2	130	3000K	10,000	TP	60 x 28	E14
CRLED	0.5	N/A	N/A	10,000	GLASS	120 x 45	B22

EVOLAMP LED LAMPS



FLC3



FLAM5



STROB



LEDGBCC

EVOLAMP

DIMMABLE	NO
CRI	>80
VOLTAGE	AC50Hz 240v

CODE	WATTAGE	LUMEN	COLOUR TEMP	RATED LIFE HRS	MATERIAL	DIMENSIONS	CAP
FLC3/BC	3	N/A	N/A	10,000	GLASS	95 x 35	B22
FLC3/ES	3	N/A	N/A	10,000	GLASS	95 x 35	E27
FLAM5	5	N/A	N/A	10,000	TP	150 x 60	E27
STROB/B22	1	N/A	N/A	30,000	TP	110 x 60	B22
STROB/ES	1	N/A	N/A	30,000	TP	110 x 60	E27
LEDGBCC/ES	0.5	N/A	N/A	20,000	TP	70 x 50	E27
LEDGBCC/BC	0.5	N/A	N/A	20,000	TP	70 x 50	B22

EVOLAMP

EVOLAMP LED LAMPS

**E27 LAMPHOLDER WITH
 E40 ADAPTOR**

**DESIGNED FOR NON
 ENCLOSED LUMINAIRES**

NON DIMMABLE

CRI >80

BEAM ANGLE 120°

VOLTAGE 240V

RATED LIFE 30,000 HRS

CAP E27

DIMMABLE NO



CODE	WATTAGE	LUMEN	COLOUR TEMP	DIMENSIONS
TUL50/4K	50W	5000	4000K	218x90
TUL100/4k	100W	10000	4000K	265x120

EVOLAMP LED PVC LAMPS GOLF / PEAR



FILGB2WWBC



FILGB2RES



FILGB2YES



FILGB2BBC



FILGB2GBC



FILPR2ES

LUMENS		COLOUR TEMP	DIMENSIONS	
2W	250lm	2700K WARM WHITE	BC	70 x 45mm
			ES	70 x 45mm

EVOLAMP

DIMMABLE	NO
CRI	>80
RATED LIFE	(70B50) 10,000hr
VOLTAGE	AC50Hz 240v
MATERIAL	PC
LED TYPE	FILAMENT

CODE

GOLF

FILGB2WWBC
 FILGB2WWES
 FILGB2RBC
 FILGB2RES
 FILGB2YBC
 FILGB2YES
 FILGB2BBC
 FILGB2BES
 FILGB2GBC
 FILGB2GES

PEAR

FILPR2ES

CROMPTON LED DIMMABLE FILAMENT LAMPS

CROMPTON

DIMMABLE	YES
CRI	>80
RATED LIFE	(70B50) 10,000hr
VOLTAGE	AC50Hz 240v
MATERIAL	GLASS
LED TYPE	FILAMENT



CODE

7130
7147
7154
7161/E

Candle

LUMENS		COLOUR TEMP	DIMENSIONS	
5W	470lm	2700K WARM WHITE	BC	91 x 35mm
			SBC	97 x 35mm
			ES	93 x 35mm
			SES	95 x 35mm

Round

LUMENS		COLOUR TEMP	DIMENSIONS	
5W	470lm	2700K WARM WHITE	BC	76 x 45mm
			SBC	80 x 45mm
			ES	78 x 45mm
			SES	78 x 45mm

CODE

7215
7222
7239
7246

CROMPTON LED THERMAL PLASTIC LAMPS



CROMPTON

DIMMABLE	NO
CRI	>80
RATED LIFE	(70B50) 15,000hr
VOLTAGE	AC50Hz 240v
MATERIAL	TP
LED TYPE	SMD2835

Candle

LUMENS		COLOUR TEMP	DIMENSIONS	
5.5W	470lm	2700K WARM WHITE	BC	100 x 35mm
			SBC	105 x 35mm
			ES	100 x 35mm
			SES	105 x 35mm

Round

LUMENS		COLOUR TEMP	DIMENSIONS	
5.5W	470lm	2700K WARM WHITE	BC	82 x 45mm
			SBC	82 x 45mm
			ES	83 x 45mm
			SES	83 x 45mm

CODE

11298
11304
11311
11328

CODE

11496
11502
11519
11526

CROMPTON

CROMPTON DIMMABLE LED THERMAL PLASTIC LAMPS

DIMMABLE	YES
CRI	>80
RATED LIFE	(70B50) 15,000hr
VOLTAGE	AC50Hz 240v
MATERIAL	TP
LED TYPE	SMD2835



CANDLE

- CODE**
13476
14558
13483
13490

LUMENS		COLOUR TEMP	DIMENSIONS	
5.5W	470lm	2700K WARM WHITE	BC	100 x 35mm
			SBC	105 x 35mm
			ES	100 x 35mm
			SES	105 x 35mm

ROUND

- CODE**
13568
13575
13582

LUMENS		COLOUR TEMP	DIMENSIONS	
5.5W	470lm	2700K WARM WHITE	BC	82 x 45mm
			ES	82 x 45mm
			SES	83 x 45mm



CROMPTON LED THERMAL PLASTIC GLS LAMPS



CROMPTON

CRI	>80
RATED LIFE	(70B50) 15,000hr
VOLTAGE	AC50Hz 240v
MATERIAL	TP
LED TYPE	SMD2835

GLS OPAL - NON DIMMABLE

LUMENS		COLOUR TEMP	DIMENSIONS	
14W	1521lm	2700K WARM WHITE	BC	120 x 65
			ES	120 x 65

GLS OPAL - DIMMABLE

LUMENS		COLOUR TEMP	DIMENSIONS	
14W	1521lm	2700K WARM WHITE	BC	120 x 65
			ES	128 x 70

CODE

11878

11885

CODE

11892

11908

CROMPTON

**CROMPTON DIMMABLE
LED FILAMENT GLS LAMPS**

DIMMABLE	YES
CRI	>80
RATED LIFE	(70B50) 15,000hr
VOLTAGE	AC50Hz 240v
MATERIAL	GLASS
LED TYPE	FILAMENT



- CODE**
- 4184**
 - 4191**
 - 4207**
 - 4214**

GLS

LUMENS		COLOUR TEMP	DIMENSIONS	
5W	470lm	2700K WARM WHITE	BC	102 x 60mm
			ES	102 x 60mm
7.5W	806lm	2700K WARM WHITE	BC	102 x 60mm
			ES	102 x 60mm

CROMPTON DIMMABLE LED ANTIQUE FILAMENT LAMPS



ST64

LUMENS		COLOUR TEMP	DIMENSIONS	
5W	410lm	2200K EXTRA WARM WHITE	BC	138 x 64mm
			ES	138 x 64mm

LUMENS		COLOUR TEMP	DIMENSIONS	
7.5W	638lm	2200K EXTRA WARM WHITE	BC	138 x 64mm
			ES	138 x 64mm

G80

LUMENS		COLOUR TEMP	DIMENSIONS	
5W	410lm	2200K EXTRA WARM WHITE	BC	120 x 80mm
			ES	120 x 80mm

G95

LUMENS		COLOUR TEMP	DIMENSIONS	
5W	410lm	2200K EXTRA WARM WHITE	BC	138 x 95mm
			ES	138 x 95mm

G125

LUMENS		COLOUR TEMP	DIMENSIONS	
7.5W	638lm	2200K EXTRA WARM WHITE	BC	175 x 125mm
			ES	175 x 125mm

CROMPTON

DIMMABLE	YES
CRI	>80
RATED LIFE	(70B50) 10,000hr
VOLTAGE	AC50Hz 240v
MATERIAL	GLASS
LED TYPE	FILAMENT

CODE

4221

4238

4245

4252

CODE

4269

4276

CODE

4283

4290

CODE

4306

4313

CROMPTON

CROMPTON LED G9 G4 & R7s LAMPS

DIMMABLE	NO
CRI	>80
RATED LIFE	(70B50) 15,000hr
VOLTAGE	AC50Hz 240v
MATERIAL	PC
LED TYPE	SMD2835



3415



14756



10994

G9

LUMENS		COLOUR TEMP	DIMENSIONS	
2.5W	210lm	2700K WARM WHITE	G9	16.5 x 49mm
2.5W	210lm	4000K COOL WHITE		
RATED LIFE (70B50)				
6,000				
VOLTAGE				
AC50Hz 240v				

G4

LUMENS		COLOUR TEMP	DIMENSIONS	
2.5W	190lm	2700K WARM WHITE	G4	37 x 10mm
2.5W	200lm	4000K COOL WHITE		
RATED LIFE (70B50)				
25,000				
VOLTAGE				
12V				

R7s

LUMENS		COLOUR TEMP	DIMENSIONS	
6W	610lm	3000K WARM WHITE	78 x 20	118 x 20mm
9W	790lm			
RATED LIFE (70B50)				
20,000				
VOLTAGE				
AC50Hz 240v				

CODE

3415

3422

CODE

14756

14763

CODE

10994

11014



CROMPTON LED GU10 LAMPS



CROMPTON

CRI	>80
RATED LIFE	(70B50) 15,000hr
VOLTAGE	AC50Hz 240v
MATERIAL	GLASS
LED TYPE	SMD2835

LUMENS		COLOUR TEMP	DIMENSIONS
4.5W	340lm	2700K WARM WHITE	53 x 50
4.5W	360lm	4000K COOL WHITE	
			DIMMABLE
			NO

DIMMABLE

LUMENS		COLOUR TEMP	DIMENSIONS
4.5W	360lm	2700K WARM WHITE	56 x 50
4.5W	390lm	4000K COOL WHITE	
			DIMMABLE
			YES

CODE

4870

4887

CODE

6102

6119

CROMPTON

CROMPTON LED REFLECTOR LAMPS

DIMMABLE	NO
CRI	>80
RATED LIFE	(70B50) 20,000hr
VOLTAGE	AC50Hz 240v
MATERIAL	PC
LED TYPE	SMD2835



- CODE**
- 12707**
 - 12714**
 - 12721**
 - 12738**

LUMENS		COLOUR TEMP	DIMENSIONS	
3.5W	150lm	2700K WARM WHITE	R39	82 x 39mm
4.5W	335lm		R50	82 x 50mm
8W	450lm		R64	82 x 64mm
10W	580lm		R80	82 x 80mm

EVOLAMP OVEN / HEAT LAMPS



Q025



G9040



IR150RQ



RJDD70



DE300

EVOLAMP

DIMMABLE	YES
CRI	>80
VOLTAGE	AC50Hz 240v
MATERIAL	Glass

OVEN

WATTAGE	CAP	RATED LIFE (70B50)	DIMENSIONS	
25W	E14	1,000hr	Q025	55 x 25mm
40W	G9		G9040	40 x 14mm

CODE

Q025
G9040

INFRARED

WATTAGE	CAP	COLOUR	DIMENSIONS	
150W	E27	RED	125 x 177mm	
250W	E27	RED	125 x 177mm	
250W	E27	DIFFUSED	125 x 177mm	

CODE

IR150RQ
IR250RQ
IR250DQ

RALOGEN

WATTAGE	CAP	TYPE	DIMENSIONS	
70W	E27	HEAT LAMP	105 x 32mm	
160W	E27	HEAT LAMP	105 x 32mm	

CODE

RJDD70
RJDD160

HEAT LAMP

WATTAGE	CAP	TYPE	DIMENSIONS	
300W	R7S	HEAT LAMP	118 x 19mm	

CODE

DE300

EVOLAMP LED PVC GOLFBALL

EVOLAMP

DIMMABLE	NO
CRI	>80
RATED LIFE	(70B50) 15,000hr
VOLTAGE	AC50Hz 240v
MATERIAL	PC
LED TYPE	SMD2835



EVLEDGB1BCB/PF



EVLEDGB1BCR/PF



EVLEDGB1BCG/PF



EVLEDGB1BCY/PF



EVLEDGB1BCWW/PF



EVLEDGB1ESOWW/PF

CODE

BC

- EVLEDGB1BCB/PF
- EVLEDGB1BCR/PF
- EVLEDGB1BCG/PF
- EVLEDGB1BCY/PF
- EVLEDGB1BCWW/PF
- EVLEDGB1BCOWW/PF
- EVLEDGB1BCOCW/PF

ES

- EVLEDGB1ESB/PF
- EVLEDGB1ESR/PF
- EVLEDGB1ESG/PF
- EVLEDGB1ESY/PF
- EVLEDGB1ESWW/PF
- EVLEDGB1ESOWW/PF
- EVLEDGB1ESOCW/PF

WATTAGE		DIMENSIONS	
1W	BC	70 x 45mm	
	ES	70 x 45mm	

EVOLAMP LED GU10 COLOUR LAMPS



BLUE

GULED3BL



RED

GULED3R



GREEN

GULED3G



YELLOW

GULED3Y



AMBER

GULED3A

WATTAGE		DIMENSIONS	
3W	GU10	53 x 51mm	

EVOLAMP

DIMMABLE	YES
CRI	>80
VOLTAGE	AC50Hz 240v
MATERIAL	Glass
LED TYPE	SMD2835

CODE

GULED3BL
GULED3R
GULED3G
GULED3Y
GULED3A

RAYTECH



GELS



**MAGIC
POWER GEL
RE-USABLE
GEL**



**MAGIC GEL
RE-ENTERABLE
GEL**



**WONDER
FLUID 280
READY MIXED
RE-USABLE
TUBE GEL**



**MAGIC SPRINT
450ML RE-
ENTERABLE GEL**



**TECHNO GEL
GUM 1000ML**

RAYTECH

Bicompartiment gel with very high dielectric and thermal characteristics, ideal for connection systems (joint or enclosures) for power cables.

CODE

MAGICPOWER-GEL-500

MAGICPOWER-GEL-1000

MAGIC-GEL 300

MAGIC-GEL 1000

MAGIC-GEL 2000

WONDER-FLUID

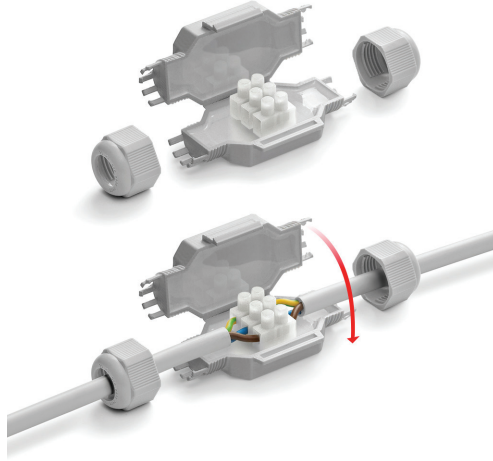
MAGIC SPRINT 450

TECHNO GELGUM

RAYTECH

IP RATING	IP68
COLOUR	BLACK
GEL	RE-ENTERABLE

GEL JOINTS



CODE

- BARNY-N**
- FRED-N**
- DINO-N**
- TOM-N**

CONNECTOR

2x2.5 CONNECTOR 75x28x19

3x2.5 CONNECTOR 80x36x23

4x4mm 125x43x25

5x16mm 180x53x42



DINO-Y

MINI BRANCH JOINTS

CODE

- BARNY-Y/N**
- FRED-Y/N**
- DINOY-N**

CONNECTOR

1x6 mm² < 1x2,5 mm² (pack 1/pc) 85x55x72

3x4 mm² < 3x2,5 mm² (blister 1/pc) 110x72x25

5 x 6mm² < 5 x 1.5 mm² 160x75x37

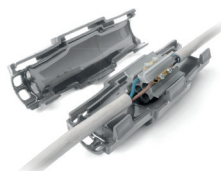
GEL CONNECTOR BOXES



DESCRIPTION	DIMENSIONS
GEL BOX FOR CONNECTORS (PACK OF 4 PCS)	41x28x19
GEL BOX FOR CONNECTORS (PACK OF 2 PCS)	45x37x21
GEL BOX FOR CONNECTORS (PACK OF 1 PC)	53x39x24
GEL BOX WITH CONNECTORS (PACK OF 1 PC)	45x37x24
GEL BOX WITH CONNECTORS (PACK OF 1 PC)	45x37x24



DESCRIPTION	DIMENSIONS
KELVIN BLISTER (PACK OF 1PC)	52x53x29
MICRO CONNECTOR 2x1-6 / 3X1-6	59x49x22



DESCRIPTION
GEL JOINT 5x6MM2 WITH CONNECTION
IPX8 Y GEL PRE FILLED JOINT

RAYTECH

CODE

HAPPY0
HAPPY1
HAPPY2
HAPPY4
HAPPY5

CODE

KELVIN
BRAV03-6

CODE

SUPER CLIK 1
KING JOINT Y 6

RAYTECH

HEAT SHRINK & GALACTIC GELS



RAYTECH ACCESSORIES

CODE
THERMOMINIMIX-N
THERMOMINIMIX-MC

DESCRIPTION	COLOUR
170 MIX PRE-CUT HEAT SHRINK SHEATHS	BLACK
170 MIX PRE-CUT HEAT SHRINK SHEATHS	MIXED COLOURS



GALACTIC PROTECTION

CODE
GALACTIC WATERSTOP
GALACTIC PROTECTION

DESCRIPTION	COLOUR
SINGLE COMPONENT STICKY GEL	CLEAR
BIOCOMPONENT RUBBER FOR PRINTED CIRCUIT PROTECTION	PINK

GEL JOINTS



Gel Cover 6



Display Counter



Ready Box 90



Mini T Joint



Mini Branch Joint

DESCRIPTION	IP RATING	CONNECTOR
MAMMAT Gel Cover 6 (6 pack)	IPX8	3x6mm
MINI GEL JOINT DISPLAY COUNTER		
MINI JOINT	IP68/ IP69K	5x4mm
GEL JOINT	IP68	3x16 PREFILLED JUNCTION BOX
MINI T JOINT	IP68	3x4mm
MINI BRANCH JOINT	IP68	3x4mm

RAYTECH

CODE

GELCOVER6

WOODINO COUNTER A

BETTY/4

READYBOX90

BOB3-N

BOB4-N

RAYTECH

SKYPLAST & GEL JOINTS



GELS

CODE
SKYPLAST250

CODE	DESCRIPTION
SKYPLAST250	250gr BIOCOMPONENT RUBBER INSULATING MIX



GEL JOINTS

CODE
SUPERCLIKMNI-L
SUPERCLIKMNI-Y

CODE	DESCRIPTION	CONNECTION	MAX CABLE
SUPERCLIKMNI-L	Super Clik mini-L - gel joint	3x 0,5-1.5mm connection block	MAX 10MM CABLE
SUPERCLIKMNI-Y	Super Clik mini-L - gel joint	1x2.5- 6mm connection block	MAX 10MM CABLE

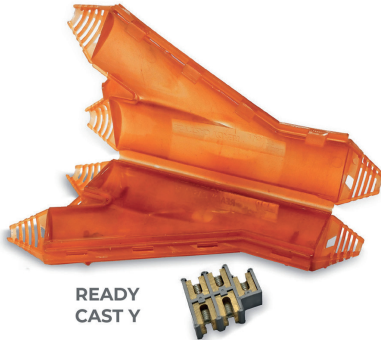
READY CAST JOINT KITS

STRAIGHT JOINT



CODE	DIMENSIONS	IP RATING	TYPE
Ready Cast L4	160x45mm	IP68	Joint Kit x2
Ready Cast L10	180x50mm	IP68	Joint Kit
Ready Cast L16/25	215x55mm	IP68	Joint Kit

BRANCH JOINT



CODE	DIMENSIONS	IP RATING	TYPE
Ready Cast Y6	180x50mm	IP68	Y Joint
Ready Cast Y16/25	180x100mm	IP68	Y Joint

RAYTECH

Ideal for Submersible
or Underground Applications

Class 2

According to CEI 64-8

An electrician with a beard, wearing a white hard hat, yellow safety glasses, a dark grey hoodie, and tan work pants with a tool belt, is working on a rack of electrical equipment. He is using a blue and black power drill to work on a blue metal rail. The rack contains various electrical components, including switches and wiring. The background is a dark, industrial setting.

Electrical Accessories

POWERTECH EXTERIOR SOCKET



EXTERIOR SOCKETS

**EASY OPEN SEE THROUGH
HINGED COVER**

LOCKABLE FRONT COVER

ROBUST CONSTRUCTION

WEATHER & DUST PROOF

MULTIPLE ENTRY POINTS

Voltage: 240V
Amp: 13AMP
Finish: GREY
Material: ABS/PC
IP rating: IP66

CODE	DESCRIPTION	DIMENSIONS
EXS/2	TWIN SWITCHED	110x168x81
EXS/1	SINGLE SWITCHED	110x110x81

EXTERIOR SOCKETS

**EASY OPEN SEE THROUGH
HINGED COVER**

LOCKABLE FRONT COVER

ROBUST CONSTRUCTION

WEATHER & DUST PROOF

MULTIPLE ENTRY POINTS

Finish: GREY
Material: ABS/PC
IP rating: IP66

POWERTECH EXTERIOR SOCKET ENCLOSURE ONLY



CODE	DESCRIPTION	DIMENSIONS
EXS2/B0	TWIN	110x168x81
EXS1/B0	SINGLE	110x110x81

POWERTECH EXTERIOR SWITCHES



EXTERIOR SWITCHES

- LED POWER INDICATOR
- WIDE SWITCH EASY OPERATION
- ROBUST CONSTRUCTION
- WEATHER & DUST PROOF
- MULTIPLE ENTRY POINTS

- Voltage:** 240V
- Amp:** 20AMP
- Finish:** GREY
- Material:** ABS/PC
- IP rating:** IP66

CODE	DESCRIPTION	DIMENSIONS
EXSW/1	1 GANG 2 WAY	110x110x81
EXSW/2	2 GANG 2 WAY	110x110x81
EXSW/3	3 GANG 2 WAY	110x110x81
EXB/1	1 GANG RETRACTIVE	110x110x81

EXTERIOR SWITCHES

Voltage: 240V
Finish: GREY
Material: PC
IP rating: IP55

EXTERIOR SWITCHES



CODE	TYPE	DIMENSIONS
L-1G2-WP	1 GANG, 2 WAY	65x80x60
L-2G2-WP	2 GANG, 2 WAY	65x80x60
L-3G2-WP	3 GANG, 2 WAY	65x95x60
L-4G2-WP	4 GANG, 2 WAY	65x130x60

STATS



RST1



FST1



PS2

STATS

Voltage: 240V

Material: PC

IP rating: IP20

CODE	DESCRIPTION	RANGE	DIFFERENTIAL	DIMENSIONS
RST1	ROOM STAT	5-35 DEGREES	>1K	80x80
FST1	FROST STAT	-5° TO 15°	>1K	80x80
PS2	PIPE/CYLINDER STAT		1.0C	120x55x35

DETECTORS

SMOKE ALARM

- INTERCONNECTABLE**
- AUTO RESET**
- TEST/HUSH FEATURE**
- ENVIRONMENT FRIENDLY**
- WITH 9V BATTERY BACKUP (INCLUDED)**
- END OF LIFE ALERT**
- LOW/MISSING BATTERY INDICATOR**

HEAT ALARM

- INTERCONNECTABLE**
- SELF TEST BUTTON**
- AUTO HUSH FUNCTION**
- WITH 9V BATTERY BACKUP (INCLUDED)**
- END OF LIFE ALERT**
- LOW/MISSING BATTERY INDICATOR**

IP rating:	IP20
Voltage:	240V
Back Up:	9V (inc)
Alarm:	85 Decibels
Interconnect:	- 20 Units
Auto Reset:	Yes

SMOKE / HEAT ALARMS



Smoke Alarm



Heat alarm

CODE	DESCRIPTION	DIMENSIONS
GTA269	SMOKE ALARM	145X55
DS239	HEAT ALARM	120X60

PATTRESS BOX

CODE	DESCRIPTION
NP5	PATTRESS Box for GTA269 and DS239

MAINS CARBON / BATTERY SMOKE



**Carbon Monoxide
Alarm**



10 Year Battery Smoke Alarm

CODE	DESCRIPTION	DIMENSIONS	VOLTAGE	INTERCONNECT
C02968H	Carbon Monoxide Alarm	130x80x70	240V	UP TO 40 UNITS
LX/S0/215	10 Year Battery Smoke Alarm	130x25	3V120X60	NO

DETECTORS

CARBON MONOXIDE ALARM

INTERCONNECTABLE

SELF TEST

RESET FEATURE

LOW BATTERY WARNING

POWER/ALARM INDICATOR
WITH 9V BATTERY BACKUP
(INCLUDED)

END OF LIFE ALERT

CERTIFIED TO BS EN50291-
1:2010 + A1:2012

10 YEAR BATTERY SMOKE ALARM

SUPPLIED WITH MOUNTING
BRACKET

HUSH/TEST BUTTON

END OF LIFE ALERT

10 YEAR RATED LITHIUM
BATTERY INCLUDED

EN14604 STANDARD

NO WIRING REQUIRED

PHOTOELECTRIC TYPE

IP Rating: IP20

Voltage: 240V

Alarm: 85 Decibels

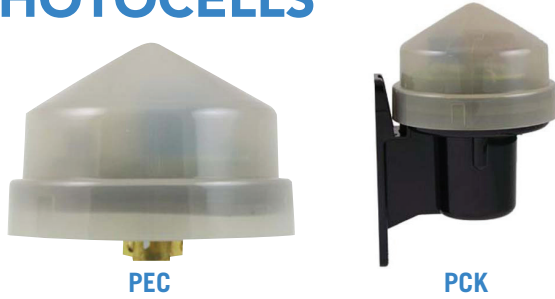
Auto Reset: Yes

ELECTRICAL ACCESSORIES

Wattage: 2Kw
Ampage: 10A/
Voltage: 240V
Lux On: 20Lx
Lux Off: 80Lx

Wattage: 1000W
Voltage: 240V
PIR Range: 12M
PIR Angle: 180°
IP Rating: IP44
Material: PC
Dimensions: 85x75x130

PHOTOCELLS



CODE	DESCRIPTION	SKT TYPE	IP RATING
PCK	KIT	NEMA	IP 65 (Fitted)
PEC	(P/Cell Only)	NEMA	N/A

REMOTE PHOTOCELL



CODE	DIMENSIONS	BORE	IP RATING
PCS	51x28x21	16mm	IP 65 (Fitted)

STAND ALONE 180 DEGREE PIR SENSOR

CODE	COLOUR
HZK202BL	Black
HZK202WH	White



LAMP ADAPTORS

ACCESSORIES



B22/E27



E27/B22



E14/GU10



E27/GU10



E40/E27



E27/E40



E27PLH/H

ADAPTORS

CODE	DESCRIPTION	WATTAGE	MATERIAL
B22/E27	B22/E27 Adaptor	60W	METAL/BAKELITE
E27/B22	E27/B22 Adaptor	60W	METAL/BAKELITE
E14/GU10	E14/GU10 Adaptor	50W	METAL/BAKELITE
E27/GU10	E27/GU10 Adaptor	50W	METAL/BAKELITE
E14/E27	E14/E27 Adaptor	50W	METAL/BAKELITE
E40/E27	E40/E27 Adaptor	100W	METAL/BAKELITE
E27/E40	E27/E40 Adaptor	100W	METAL/BAKELITE

E27 PORCELAIN

CODE	DESCRIPTION	WATTAGE	MATERIAL
E27PLH/H	E27 Porcelain	250W	PORCELAIN

HEATING

**1KW/2KW SWITCHABLE
POWER OPTIONS**

LED INDICATOR

PULL CORD OPERATION

**WITH ENERGY SAVING
RUNBACK TIMER**

Voltage: 240V
Wattage: 1KW/2KW
Dimensions: 270x230x100
Finish: White
Material: THERMOPLASTIC

DOWNFLOW HEATER WITH RUNBACK TIMER



CODE	DESCRIPTION
SFH002A/T	DOWNFLOW HEATER WITH RUNBACK TIMER

HEAT LAMP CAGE



HEATING

PREWIRED

Voltage:	240V
Wattage:	250W
Cap:	E27/ES
Dimensions:	475x210
IP Rating:	IP20
Finish:	Silver
Material:	Aluminium

CODE	DESCRIPTION
HL1	Heat Lamp Cage

HYGIENE

Wattage: 1800W
Finish: MATT/
POLISHED
CHROME
Voltage: 240V
Sensor Range: 50-200MM
Air Speed: > 85 M/S
Air Temp: 65° C
Net Weight: 3.5KG
IP Rating: IPX1
Dimensions: 320x225x173

HAND DRYER



CODE

DESCRIPTION

JXG1883AS

HAND DRYER

HAND DRYER



HYGIENE

Wattage	1800W
Finish	MATT CHROME
Voltage	240V
Sensor range	50-200MM
Air speed	> 85 M/S
Air temp	65° C
Net weight	4.3KG
IP rating	IPX1
Dimensions	325x295x171

CODE

DESCRIPTION

JXG228AS

HAND DRYER

HEATERS

SAFE: CLEAN, ODOURLESS INFRARED TECHNOLOGY – NO UV RAYS, SILENT OPERATION

EFFICIENT: 90% ENERGY CONVERSION

– 100% HEAT PRODUCTION WITHIN SECONDS!

– NO WASTEFUL HEATING OF THE AIR

EFFECTIVE: 1500 WATT LAMP

– 9FT. BLANKET OF HEAT, NOT AFFECTED BY WIND

ECONOMICAL: 5000 HR. LAMP LIFE

– USES ONLY CIRCA 10% OF THE ENERGY COSTS OF GAS HEATERS.

ENVIRONMENTALLY FRIENDLY:

– NO HARMFUL EMISSIONS OR TOXIC RESIDUALS

EASY TO OPERATE: PLUG & GO!

PROTECTIVE ALUMINIUM COVER SHIELD

DURABLE, WEATHERPROOF LIGHTWEIGHT ALUMINIUM EXTRUDED BODY

SUITABLE FOR INDOOR AND OUTDOOR USE

HIGH QUALITY JAPANESE LAMP INCLUDED

EASY LAMP REPLACEMENT

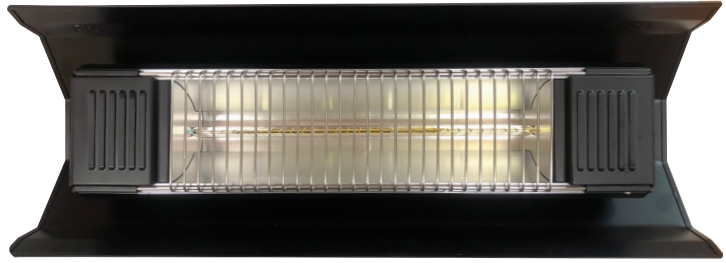
HIGHLY EFFICIENT QUALITY REFLECTOR AND LAMP

WALL MOUNTING ASSEMBLY INCLUDED

PREWIRED WITH 2.4M CABLE AND PLUGTOP

- Wattage:** 1500W
- Voltage:** 240V
- Lamp Type:** QUARTZ HALOGEN (INCLUDED)
- IP rating:** IPX4
- Weight:** 4KG
- Dimensions:** 610x210x200

INFRARED HEATER



CODE	DESCRIPTION
PH1500	INFRARED HEATER

REPLACEMENT LAMP

CODE	DESCRIPTION	DIMENSIONS
EVQ1500	1500W QUARTZ LAMP	350MM

- HIGH QUALITY JAPANESE LAMP**
- HIGHLY EFFICIENT**
- 5,000 HRS RATED LAMP LIFE**
- EASY LAMP REPLACEMENT**



TITAN ELECTRIC WALL RADIATORS WITH WIFI CONTROL



HEATERS

WIRELESS CONTROL WITH TUYA APP

OPEN WINDOW FUNCTION

OIL FILLED FOR COMFORTABLE HEAT

24 HOUR TIMER

WEEKLY PROGRAM

4 OPERATING MODES

WHEEL SET ACCESSORY AVAILABLE

Finish: IVORY
Voltage: 230V
IP Rating: IP44
Material: ALUMINIUM

CODE	DESCRIPTION	FINS	DIMENSIONS	AMPAGE	COVERAGE
H600WF	600W ELECTRIC HEATER WITH WIFI CONTROL	4	480x80x585	2.6	Up to 8 Sq M
H1000WF	1000W ELECTRIC HEATER WITH WIFI CONTROL	5	560x80x585	3.9	Up to 12 Sq M
H1500WF	1500W ELECTRIC HEATER WITH WIFI CONTROL	8	800x80x585	6.5	Up to 18 Sq M
H1800WF	1800W ELECTRIC HEATER WITH WIFI CONTROL	9	880x80x585	7.8	Up to 22 Sq M

ACCESSORY

CODE	DESCRIPTION
HWS	OPTIONAL WHEEL SET FOR ABOVE

HEATERS

WITH TIP OVER SAFETY SWITCH

OVERHEAT PROTECTION

3 X HEAT SETTINGS

HANDLE & CASTORS FOR EASY MOVEMENT

- Fins:** 9
- Finish:** LIGHT GREY
- Voltage:** 230V
- IP Rating:** IP20
- Material:** ALUMINIUM

OIL FILLED RADIATOR



CODE

DESCRIPTION

OFR92K

2KW OIL FILLED RADIATOR

OFR92K/T

2KW OIL FILLED RADIATOR, TIMER



CONVECTOR



HEATERS

3X HEAT SETTINGS
750W/1250W/2000W

THERMOSTAT

OVERHEAT PROTECTION

NEAR SILENT OPERATION

Finish: White
Voltage: 230V
IP Rating: IP20
Material: ALUMINIUM

CODE	DESCRIPTION
CVH2000	2KW CONVECTOR HEATER
CVH2000/T	2KW CONVECTOR HEATER, TIMER
WB/CVH	WALL BRACKETS

HEATERS

- 2 X HEAT SETTINGS
1000W/2000W
- ADJUSTABLE THERMOSTAT
- OVERHEAT PROTECTION
- POWER ON INDICATOR
- COOL BLOW FUNCTION
- PORTABLE

Finish: White
Voltage: 230V
IP Rating: IP20
Material: PC

FLOOR HEATERS



FH104



FH116

CODE	DESCRIPTION	DIMENSIONS
FH104	2KW FAN HEATER	260x220x130
FH116	2KW FAN HEATER	100x230x240

DIRECTIONAL PARASOL INFRARED HEATER



HEATERS

DESIGNED FOR MOUNTING ONTO A PARASOL POLE

3X500W HEAT HEADS

INDIVIDUAL HEAD SWITCHING

PRE FLEXED WITH 2 METRE LED & PLUG TOP

Wattage: 3x 500W

Voltage: 240V

CODE	DESCRIPTION
SNPHR1500	PARASOL INFRARED HEATER

SPARE LAMPS

CODE	DESCRIPTION	WATTAGE
HLR500	Ruby Red Lamp	500W
HLG500	Gold Lamp	500W

ELECTRICAL ACCESSORIES

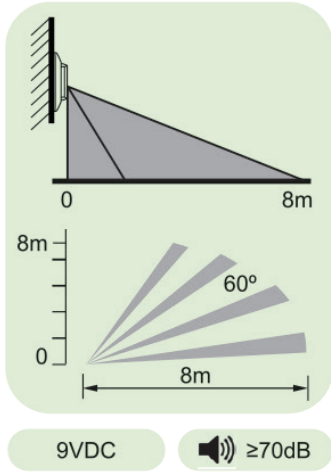
- RANGE UP TO 8M**
- 3 SETTINGS, CHIME, ALARM & OFF**
- REQUIRES 1X 9V BATTERY (INCLUDED)**

Dimensions: 110x35x70

- COMPLIES WITH BS 476 BT**
- 60 MINUTE FIRE RATING**

Diameter: 150mm
Depth: 150mm

MINI SENSOR ALARM 



CODE	DESCRIPTION
P22	BATTERY DRIVEN MINI SENSOR ALARM

FIREHAT



CODE	TYPE
FH1	FIREHAT

ELECTRICAL ACCESSORIES

ELECTRICAL ACCESSORIES



GZLH



LVLH



LVRC



LVSC



RS11



SSCLIP

CODE	CAP	LENGTH	FEATURES
GZLH	GU/GZ	300mm	<ul style="list-style-type: none"> • SHROUDED • SLEEVED • DOUBLE INSULATED
LVLH	G4/G5.3/G6	300mm	<ul style="list-style-type: none"> • HR FLEX
LVRC	N/A	50mm (Dia)	

STARTERS

CODE	WATTAGE	VOLTAGE	BOX QUANTITY
RS11	4-65W	240V	25
FS2	4-22W	240V	10
FS125	70-125W	240V	10

CLIPS

CODE	DESCRIPTION
SSCLIP	Stainless Steel Clips for corrosion proof fittings

**ELECTRICAL
 ACCESSORIES**

C/W LOCKNUT

FLAME RETARDANT

IP68 RATED

**POLYCARBONATE
 CONSTRUCTION**

**BOX QUANTITY
 42PCS – OUTER BOX
 QUANTITY = 1260**

**BOXED FOR USER
 CONVENIENCE**

Type: 20mm IP68
 GLAND

Material: PVC

Cable Dia. Range: 7-14

C/W STRIP CONNECTOR

IP65 RATED

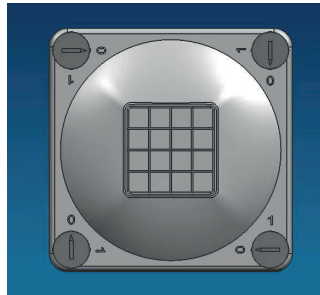
C/W MOUNTING CLIP

IP68 GLANDS



CODE	FINISH
AG20G	GREY
AG20B	BLACK
AG20R/V2	RED

IP65 JUNCTION BOX



CODE	DESCRIPTION	DIMENSIONS	FINISH
JB85/G	IP65 BOX	85x85x45	GREY
JB85/B	IP65 BOX	85x85x45	BLACK

DIMMABLE DRIVERS



CODE	WATTAGE	VOLTAGE
DRIVE6D	6W	240V
DRIVE12D	12W	240V
DRIVE18D	18W	240V
DRIVE24D	24W	240V



HQI GEAR

CODE	WATTAGE	VOLTAGE	FUSED	GEAR
MCG35	35W	240V	5A	MAGNETIC
MCG70	70W	240V	5A	MAGNETIC



HALOGEN LAMPHOLDER

CODE	LENGTH	WIDTH	MATERIAL	WATTAGE
HLH	134MM	19MM	CERAMIC	500W

ELECTRICAL ACCESSORIES

**ELECTRICAL
ACCESSORIES**

BATHROOM 4" FANS

STANDARD & TIMER TYPES

Wattage: 20W
Volts: 240V
Dimensions: 152x152x35
Extract Capacity: 93m3/hour
Material: PC



CODE	TYPE
QF4/S	STD
QF4/T	TIMER

POP UP POWER



ELECTRICAL ACCESSORIES

FEATURES

3X UK POWER SOCKETS - CONNECT UP TO 3 DIFFERENT APPLIANCES AT ONCE.

3X 13A SOCKETS + USB + USB/C SOCKET 2.1 A – CHARGE 2 DEVICES AT ONCE.

HIGH MA ALLOWANCE ENABLES FASTER CHARGING. WILL CHARGE 2 PHONES SIMULTANEOUSLY.

ILLUMINATED ON/OFF SWITCH - SAVE POWER AND CHECK AT A GLANCE THAT APPLIANCES HAVE BEEN SWITCHED OFF.

ALUMINIUM FINISH - HARD WEARING AND ATTRACTIVE FINISH, MATCHES MOST DECOR.

1.5M INSTALLATION CABLE WITH FITTED PLUG - LONG CABLE FOR EASE OF INSTALLATION AND POSITIONING. NO WIRING REQUIRED, SIMPLY PLUGS INTO A POWER SOCKET.

60MM DIAMETER INSTALLATION HOLE - DISCREET, FLUSH FINISH WHEN INSTALLED.

USB AMP:	2.1A
Voltage:	220-240V
Height:	413mm
Diameter:	84.5mm
Cutout:	60mm

CODE	DESCRIPTION
POP3	POP UP POWER 3X13A SOCKETS +USB + USB/C

FLYKILLERS

LED FLYKILLER

HIGH QUALITY UV-A LED TUBES

FULL PROTECTIVE OUTER MESH

ALUMINIUM ALLOY + ABS FIREPROOF HOUSING

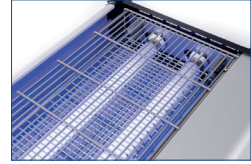
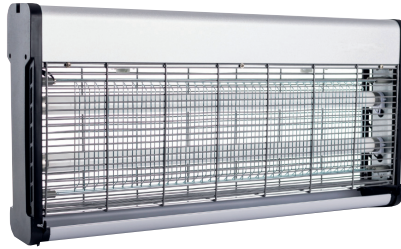
LARGE COLLECTION TRAY

HANGING CHAIN INCLUDED

FREE STANDING OR HANGING

NO-SPRAY, ECO-FRIENDLY

- Volts:** 240V
- High Voltage:** 4000V
- Coverage:** Up To 150M²
- IP Rating:** IP20
- Finish:** BLACK/MATT SILVER
- Material:** ALUMINIUM & ABS



CODE	WATTAGE	DIMENSIONS	COVERAGE
FLY10W	2x 5W	38x10x26.3mm	80m ²
FLY18W	2x 9W	63.5x10x31.1mm	150m ²

Spare lamps

CODE	DESCRIPTION
FK5LED	5W LED Fly Tube
FK9LED	9W LED Fly Tube
FK10	10W Fly Tube (340mm)

OSCILLATING FANS



FANS

3 SPEED SETTINGS

QUIET MOTOR

VERTICAL TILT

75 DEGREE OSCILLATION

Finish: White
Voltage: 230V
IP Rating: IP20
Material: PC/ALUMINIUM

CODE	DESCRIPTION
DOF12	12 INCH DESK FAN
DOF16	16 INCH DESK FAN
POF16	16 INCH PEDESTAL FAN

**ELECTRICAL
 ACCESSORIES**

IDEAL FOR USE WITH

- FESTIVE LIGHTING
- WATER FEATURES
- OUTDOOR HEATING EQUIPMENT
- GARDEN APPLIANCES
- GARDEN POWER TOOLS
- ALSO AVAILABLE IN GREEN

Material: PC
Finish: BLACK
IP Rating: IP55

IP55 BOX ENCLOSURE



CODE	INTERNAL DIMENSIONS (WXHXD)
FL-1859-330	330x230 x140
FL-1859-285	285x150 x110
FL-1859-200	200x90x90

ELECTRICAL BOXES

**BOX QTY 200PCS
 C/W STRIP CONNECTOR**

Material: PC



CODE	TYPE	DIMENSIONS
EJBSQ	SQUARE BOX	65x65 x35
EJBCO	COFFIN BOX	90x45x45

GLOSSARY

COLOUR RENDERING INDEX (CRI)

A scale from 0-100 that describes how natural the colour of objects will appear as compared to a standard light source (100 CRI). The standard light sources are incandescent/halogen bulbs (100 CRI) for cool sources.

DOWNLIGHT

Small luminaire, which distributes the light downward, usually recessed in the ceiling.

EMERGENCY LIGHTING

Lighting provided for use when the supply to the normal lighting fails.

INDIRECT LIGHTING

The method of lighting a space by directing the light from luminaires upwards towards the ceiling. The light scattered off the ceiling produces a soft, diffused illumination for the entire area.

LIGHT EMITTING DIODE (LED)

A semiconductor that when positively biased emits visible light. Some LEDs today incorporate fluorescent materials to change the colour characteristics of the emitted light.

ELECTRONIC BALLAST

A shortened name for a fluorescent high frequency electronic ballast. Electronic ballasts use solid state electronic components and typically operate fluorescent lamps at frequencies in the range 25-35 kHz. The benefits are: increased lamp efficacy, reduced ballast losses, and lighter, smaller ballasts.

DIMMER, DIMMING CONTROL

A device used to lower the light output of a source, usually by reducing the wattage it is being operated at. Dimming controls are increasing in popularity as energy saving devices.

DRIVER

For light emitting diodes, a device that regulates the voltage and current powering the source.

LOUVRE

A fixed shield, usually divided into small cells, which is attached to the face of a luminaire to reduce direct glare.

LUMENS

A unit measurement of the rate at which a lamp produces light. A lamp's light output rating expresses the total amount of light emitted in all directions per unit time.

LUMENS/WATTS

A ratio expressing the luminous efficacy of a light source.

LUX (LX)

A unit of illuminance or light falling onto a surface. One lux is equal to one lumen per square metre.

RECESSED LUMINAIRE

Luminaire mounted above the ceiling or behind a wall or other surface so that any visible projection is insignificant.

FLOOD

Used to refer to the beam pattern of a reflector lamp, which disperses the light over a wide beam angle, typically 20 degrees or more.

SPEED OF LIGHT

Approximately 186,000 miles per second.

COLOUR TEMPERATURE

A term used to describe the "whiteness" of light. It is the temperature of a piece of metal (or black body) that emits the same colour light as the compared light source.

Warm White: Refers to a colour temperature around 3000K, providing a yellowish-white light

Cool White: Refers to a colour temperature of around 4100K.

Daylight: A lamp resembling the colour of daylight, typically with a colour temperature of 5500K to 6500K.

WHAT IS MAINTAINED/NONMAINTAINED LUMINAIRE?

Choosing Maintained or Non-Maintained Luminaires is completely the decision of the individual depending on the premises it is to be used in.

Maintained Emergency Luminaire is a luminaire which is powered at all times, this would usually be found in places like cinemas, theatres and clubs, this then prevents complete darkness when the main lights are off or dimmed.

Non-Maintained Emergency Luminaire

is a luminaire which only comes on when the normal lighting fails, this is usually used in the workplace or shops where normal lighting is used while the premises are occupied.

INGRESS PROTECTION RATING

is an industry standard classification system that denotes the level of protection an item of equipment has against both solid and liquid particles, in accordance with BS EN60529. The code is separated into two numbers, following the letters IP. For example, IP65. The larger the digit, the greater the level of protection.

N.B. IPX4 is used in some cases, showing that a fitting is splash-proof from all sides.

IP	?	?
	FIRST NUMBER level of protection against solid particles	SECOND NUMBER level of protection against liquids
0	0	0
1	1	1
2	2	2
3	3	3
4	4	4
5	5	5
6	6	6
	7	7
	8	8

0	No protection at all.
1	Protection against large solid objects diameter <50mm e.g. a hand.
2	Protection against mediumsized solid objects diameter <12.5mm e.g. a finger.
3	Protection against small solid objects, diameter <2.5mm e.g. wire or small tools.
4	Protection against small solid objects, diameter <1.0mm e.g. thin objects and wires.
5	Limited protection against dust.
6	Total protection against dust.

0	No protection at all.
1	Protection against vertically dripping water.
2	Protection against dripping water when tilted up to 15°.
3	Protection against spraying water at any angle up to 60° from vertical.
4	Protection against water splashing against the enclosure from any direction.
5	Protection against water jets projected by a nozzle (6.3mm) against enclosure from any direction.
6	Protection against water projected in powerful jets(12.5mm nozzle) against the enclosure from any direction.
7	Protection against restricted immersion up to 1m.
8	Protection against continuous immersion in water.

CONDITIONS OF SALE RELATING TO THIS PRICELIST

- 1 All prices exclude VAT at the appropriate rate.
- 2 Goods where supplied correctly may not be returned unless specifically agreed.
- 3 Carriage will be charged at cost for orders under the value of 400. Orders over this value will be delivered F.O.C.
- 4 Terms of trading are strictly 30 days Nett on approved accounts.
- 5 Ownership of the goods will remain the property of the company until payment for the goods has been made in full.
- 6 Price may be subject to surcharge due to exchange fluctuations.
- 7 All products, unless otherwise stated and with the exception of lamps, have a 1 year warranty.
- 8 In the event of goods supplied by the company deemed faulty, the company shall replace these goods free of charge.
- 9 The company shall not, however be liable for any secondary costs.
- 10 Environmental Management Charges (EMCs) will be administered where applicable.
- 11 All stated measurements are given as a guide only. The company will accept no responsibility for errors or omissions.
- 12 The company reserves the right to change product specification or design at any time.

SPECTRUM

DISTRIBUTION LIMITED

Unit F1 Weatherwell Business Park
Newlands Lucan Road
Clondalkin, Dublin 22, Ireland.

Phone +353 1 467 0500 | **Fax** +353 1 467 0507

Email sales@spectrumdistribution.ie

www.spectrumdistribution.ie